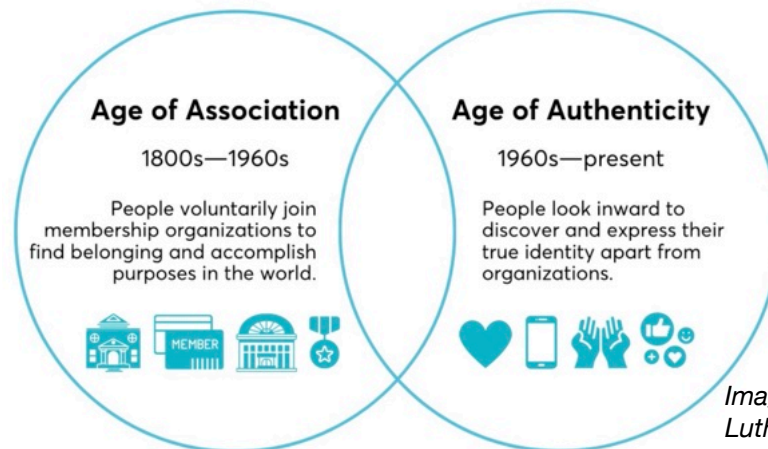




Jesus Christ is the same yesterday, and today, and forever.
- Hebrews 13:8

Summary Notes

1. There is no 10-step plan to "fix" the church because...
2. Changes in worship attendance are not caused by any one thing, but really part of a much larger cultural shift that has been happening since the 1960s.
3. Our human tendency to try to look for what or who to blame is actually spending energy we could be using to ask where God is leading us to build new relationships with new people.
4. Large societal shifts are happening in how people connect to each other and God.
5. One way to understand these changes is talking about the shift from the "age of association" to the "age of authenticity."



*Image used courtesy of
Luther Seminary, Faith+Lead*

6. These shifts mean that our previous strategies for "attracting" new people to our churches don't work like they used to. While some have fond memories of the pastor knocking on doors in the neighborhood, the path forward is paved with different strategies for engaging those who aren't members of the church.
7. We have a lot to learn. We are invited to approach this work of church renewal as students, eager to learn more about our neighbors, our faith practices, and what God is doing in the world, so we can join God out there rather than having our only focus be on how to get more people in here.