

# Greater Milwaukee Synod Assembly



## *For Everyone Born* A PLACE AT THE TABLE

SYNOD ASSEMBLY 2019  
MAY 31 - JUNE 1  
ITALIAN COMMUNITY CENTER

### *Table of Contents*

Things to Know	p. 3	Balance Sheet	pp. 27-29
Assembly Agenda	p. 4	Budget Proposal Rationale	p. 30
Committees During Assembly	p. 5	Budgets and Actual	pp. 31-32
Map	p. 6	Explanation of Budget	pp. 33-35
Sponsors	p. 7	Designated Restricted Funds	pp. 36-37
Speaker Biographies	pp. 8-11	Your Story/Our Story	pp. 38-39
Reports	p. 11	Anniversaries	pp. 40-45
Rules and Procedures	pp. 12-14	Plenary Hymns	pp. 46-49
Vision, Mission, Values, Practices	p. 15	Sending Service	pp. 50-51
Reference and Counsel Report	pp. 16-17	Robert's Rules	pp. 52-53
Resolutions	pp. 18-24	Notes	pp. 54-55
Nominations	pp. 25-26	Nomination Form	p. 56



## THINGS TO KNOW

**Guidebook:** Guidebook is the handy app that holds all the Synod Assembly information we can pack so it's easy, portable, and always up to date. First, download the ELCA app at [guidebook.com/g/assembly2019/](https://guidebook.com/g/assembly2019/) or search for "ELCA Organizations & Events" in the app store on your device. Then search for "Greater Milwaukee Synod Assembly 2019" to download the guide.

You may also scan this QR code (apple products scan from the camera automatically).



For folks who want to access the guide from a desktop/laptop computer, this is the direct link: [guidebook.com/guide/152887](https://guidebook.com/guide/152887).

**Online Document Access:** You can also access all assembly materials on the synod website at: <https://milwaukeesynod.org/event/2019-synod-assembly/>

**Assembly Rules:** We encourage you to take a few minutes to familiarize yourself with the rules for the assembly. These rules are located on pages 12-14 of this supplement and include information on speaking during assembly. Pages 52-53 of this supplement contain information about Robert's Rules to assist you as we conduct business.

**Amendments and Motions:** If you're making a motion or an amendment please be prepared to provide this information in writing. You can email your written information to [assembly19@gmselca.org](mailto:assembly19@gmselca.org) or carry it directly to the Tech area near the back of the plenary. If you choose to handwrite your amendment or motion, please use block letters and print neatly.

**Nomination Forms:** If you need a nomination form during assembly, please use the form on the last page of this booklet or visit this link: <http://bit.ly/30Mmidn>. All nomination forms should be given to Mary Ronskog as quickly as possible.

**Childcare:** Childcare is in the Board Room.

Friday: 4 - 9 p.m. (includes dinner)

Saturday: 8 a.m. - 1 p.m. (includes lunch) and 1 - 4 p.m.

**Text to Give:** Offering given through "Text to Give" will be matched by Vanco up to \$500. Simply send a text to 414-939-7944 with the amount you would like to contribute. Make sure to include the dollar sign before the amount. Example: \$50. Within a few minutes, you'll be sent a text with a link to register. Click on the link and enter your cardholder name and credit or debit card information. Once your registration is complete, you'll receive a text verification and a receipt via email. If you used "Text to Give" last year and for future giving, your offering will process immediately.

**Assembly Evaluations:** After assembly is over, we would love for you to give feedback by filling out this form: [milwaukeesynod.org/eventeval](https://milwaukeesynod.org/eventeval)

**WIFI: NETWORK:** Bartolottas-guest

PASSWORD: BrgGuest!

**Restrooms:** Restrooms are located near the main registration area and outside of Festa Hall.

**Did we miss something? Please stop at the registration desk with any questions.**

# AGENDA

## **Friday, May 31**

3:00 pm Registration opens - Galleria  
4:00 pm Childcare opens - Board Room  
4:00 pm New to Synod Assembly Workshop - Conference Rooms  
5:30 pm Dinner with keynote presentation by Rev. Emmy Kegler - The Grand Ballroom  
7:00 pm Registration closes until Saturday morning  
7:00 pm Opening Worship - Festa Hall  
8:15 pm Dessert Reception - Galleria  
9:00 pm Childcare closes

## **Saturday, June 1**

7:30 am Registration opens - Galleria  
8:00 am Childcare opens - Board Room (breakfast with parents)  
8:00 am Breakfast - Galleria  
8:30 am Plenary 1 - The Grand Ballroom

- Music
- Welcome
- Devotion
- Introduction of Planning Team and Special Guests
- Report of Credentials
- Assembly Appointments
- Assembly Orientation
- Adoption of Agenda
- Approval of Rules/Resolutions/Elections Procedure
- Report of the Nominating Committee
- Budget Presentation
- ELCA Representative Report
- Reference and Counsel Report

10:15 am Break  
10:30 am Deadline for Nominations  
10:30 am Resume Plenary 1

- Lutheran Campus Ministry Report
- Bishop's Report
- Vice President's Report
- Feasibility Study Report
- First Ballot

12:30 pm Lunch  
1:30 pm Plenary 2 - The Grand Ballroom

- Music
- Devotion
- Report of the First Ballot
- Second Ballot
- Action on the Budget
- Outreach for Hope Report
- Resolutions

3:50 pm Sending and Installation of Elected Persons  
4:00 pm Childcare closes



## COMMITTEES DURING ASSEMBLY

### **Credentials Committee**

Sheila Bauer	Maia Nielsen
Rev. Bill Beyer	Rev. Kelly Nieman Anderson
Rev. Jim Bickel	Peder Romskog
Chuck Ellingson	Diane Roznowski
Betty Gelhar	Deacon Ellie Schmidtke
Rev. Carol Hegland	Penny Schwid
Charlotte John-Gomez	Rev. Eric Silberschmidt
Deacon Judy Kolstad	Deacon Marian Wasierski
Becca Laabs	Rev. Vicki Watkins

### **Reference and Counsel Committee**

Milw 1	Nancy Groethe
Milw 2	Rev. Logan Vang
Milw 3	Rev. Denise Mbise
Milw 4	Justin Kierzek
Northern Lakeshore	Connie Hoffman
Northwest	Rev. Andrew Yoos
Lake Country	Peter Klatt
Waukesha	Karen Simington
Belle City	Rev. Harvard Stephens
Kenosha/W. Racine	Jeffrey Kehoe (Chairperson)
VP	Joyce Caldwell
Bishop	Rev. Paul Erickson
Secretary	Matthew Brockmeier

### **Worship Planning Team**

Rev. Lindsey Beukelman  
Amanda Christensen  
Hazel Griffin  
Rev. Elizabeth Lee  
Rev. Kelly Nieman Anderson  
Michael Schaner

### **Elections Committee**

Milw 1	Paul Tjaden
Milw 2	Alyna Romain
Milw 3	Rev. Jay Thorson
Milw 4	Russ Watson
Northern Lakeshore	Kathy Nelson
Northwest	Rev. Joe Wilkinson
Lake Country	Rev. Karen Jost
Waukesha	Marilyn Timper
Belle City	Jeffrey Alderson
Kenosha/W. Racine	Rev. Elizabeth Lee

### **Synod Assembly Planning Team**

Rev. Bill Beyer	John Mahoney
Robert Gee	Rev. Tom Pietz
Hazel Griffin	Tom Schaffer
Char Guiliani	Michael Schaner
Paul Hoffman	Rev. Tim Tahtinen
Rev. Lindsay Jordan	Kelli Zellinger

## PARLIAMENTARIAN

Steve Knowles

## MUSICIANS

### **Worship**

Michael Schaner, piano  
Deacon Susan Daniels, percussion  
Susan Wallenslager, flute  
Rev. Dave Patterson, guitar

### **Plenary**

Phil Smith, piano  
Rev. Steve Bogie, guitar  
Rev. Delaney Schlake-Kruse, guitar



## SPONSORS

Thank you to our sponsors for helping to keep Synod Assembly costs down!



**Mission Investment Fund**  
**Evangelical Lutheran Church in America**  
God's work. Our hands.



*Don't Forget!*



*We need your  
decorated bags back by  
Synod Assembly worship:*

*Friday, May 31 at 7 p.m.  
Italian Community Center, Festa Ballroom*

## **SPEAKER BIOGRAPHIES**



### **Bishop Paul Erickson**

The Rev. Paul D. Erickson was elected June 4, 2016 to a six-year term as bishop of the Greater Milwaukee Synod of the Evangelical Lutheran Church in America.

Erickson earned a Bachelor of Arts degree from Gustavus Adolphus College in St. Peter, Minn., in 1983 and a Master of Divinity from the Lutheran School of Theology at Chicago in 1989. He also earned a Doctor of Ministry degree in Congregational Mission and Leadership from Luther Seminary in St. Paul, Minn., in 2012.

He returned to the Greater Milwaukee Synod from St. Paul, where he served as the director of Agora, a ministry that works to develop lay leaders for immigrant and multicultural congregations in Minnesota and South Dakota. Erickson grew up in the Greater Milwaukee Synod, where he was a member of St. Matthew's in Wauwatosa and Bethel in Muskego. Before attending seminary, he served in the Lutheran Volunteer Corps in Baltimore, MD and studied Spanish in Mexico. He has served congregations in Chicago, Milwaukee, and West St. Paul, MN before serving as Assistant to the Bishop for Evangelical Mission in the Saint Paul Area Synod from 2008-2014.

Bishop Erickson has spent much of his ministry working in cross-cultural settings and has traveled extensively to visit global companions in Guatemala, El Salvador, and Tanzania. He feels called to lead the church as it explores ways to move forward with curiosity, courage, compassion, and collaboration. Paul and his wife, Lynn (an ELCA pastor serving in Milwaukee), have two children: David and Sarah.



### **Matthew Brockmeier, Synod Secretary**

Matthew Brockmeier, a member and past president of St. Paul's Evangelical Lutheran Church in Random Lake, has also served as synod secretary since 2011. Most of his career was in nonprofit management, with related activities including teaching undergraduate courses in the field. He now serves as president of the Village of Random Lake, Wisconsin and as treasurer of the Random Lake Area Interfaith Food Pantry. He married Loretta 22 years ago, getting three great children in the bargain. Since then a son-in-law and a granddaughter have arrived on the scene.



### **Joyce A. Caldwell, PhD, Synod Vice President**

Dr. Joyce Caldwell was elected as Vice President of the Synod in 2017. She recently retired as Associate University Provost and Dean of Adult Professional and Graduate Studies for Ottawa University (OU). She received her Ph.D. from Fielding Graduate University in Human and Organizational Systems, with a Concentration in Transformative Learning for Social Justice. She also holds a Master's degree from Fielding in Human Development and a M.A. in Education—Curriculum and Instruction from Marquette University. Caldwell has worked as a consultant, writer, and resource developer for various non-profits. She served as the executive director of Lutheran Human Relations Association and as an Associate in Ministry for Faith Lutheran Church, Cedarburg.

Caldwell is a skilled adult educator and has been the leading co-author of several resources on race, culture, and white privilege, including the ELCA resource *Troubling the Waters for Healing of the Church: A Journey for White Christians from Privilege to Partnership* and the ELCA web-based resource *One Body, Many Members*. Her dissertation, *Living in the Intersections: An Ethnographic Study of an Urban Lutheran Congregation*, explored how a congregation that is living in the intersection of race and class reflects on and

negotiates those intersections, and the factors that foster or hinder practices and interactions in the intersections that  
**8** could lead toward becoming an authentically integrated multiracial congregation or a mutual partner in its diverse neighborhood.



## **SPEAKER BIOGRAPHIES**



### **Tom Gauthier, Synod Treasurer**

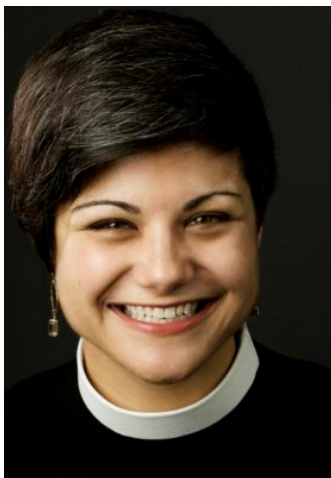
Tom was elected to serve as the Treasurer of the Greater Milwaukee Synod at the Synod Assembly in 2017. Prior to that, Tom served a four-year term on the Synod council as the representative of the Northern Lakeshore Cluster. Tom joined Grace Lutheran in Thiensville in 2010, and has served on the council and committees there, including the Call Committee and a year as president.

Tom works as the president of Adonai Employment, a nonprofit organization that works to connect individuals with disabilities and employers with needs. Tom also serves on the board of Next Act Theatre, the community advisory board of WUWM (Milwaukee's NPR Station), and the capital campaign committee for the new North Milwaukee Arthaus. Tom has served on seven other nonprofit boards in recent years. Tom earned his BA from UWM. Tom describes himself as a "Lutheran by choice", having been raised in a different faith tradition.



### **Carolyn Karl, Afternoon Devotions**

Faith has always played an important role in Carolyn's life. She was active in her high school youth group in Atlanta, Georgia, and volunteered as a youth leader for several years in Illinois and Missouri before leaving her law career to serve in professional youth ministry. She was raised Presbyterian and has served in ELCA congregations for her last four calls. Carolyn has a Certificate in Youth and Family Ministry from Princeton Theological Seminary, and a Certificate in Cross+Generational Ministry through the Greater Milwaukee Synod and Vibrant Faith Ministries. She has been involved in the Greater Milwaukee Synod since 2008, serving in cross+generational ministry at Bay Shore and Kingo Lutheran Churches and as an active member in the synod Cross+Generational Ministry Network. Carolyn and her husband Steve have three children in college.



### **Rev. Emmy Kegler, Banquet Speaker**

Rev. Emmy Kegler is the pastor of Grace Lutheran Church in Northeast Minneapolis ([gracenempls.org](http://gracenempls.org)), the founder and editor of Queer Grace, an encyclopedia of online resources around LGBTQ life and faith ([queergrace.com](http://queergrace.com)), and a co-leader of the Queer Grace Community, a group of LGBTQ+ Christians in the Twin Cities ([queergracecommunity.com](http://queergracecommunity.com)). Her first book, *One Coin Found: How God's Love Stretches to the Margins*, is the story of her journey with and through Scripture as an openly gay woman called to ordained ministry. She lives in Saint Paul with her wife Michelle and their two dogs and cat.



## **SPEAKER BIOGRAPHIES**



### **Steve Knowles, Parliamentarian**

Following graduation from St. Olaf College and the University of Wisconsin Law School, Steve served four years as a lawyer in the Judge Advocate General's Department of the U.S. Air Force. He has been in private law practice in Milwaukee since 1977 and is with the firm of Davis & Kuelthau, s.c.

Steve's law practice concentrates on private sector employment law. He advises corporate employers on all aspects of employment law and has defended employers against all types of employment-related claims in courts and administrative agencies throughout the Midwest.

Steve was a member of the first Synod Council of the Greater Milwaukee Synod and subsequently served eight years as Secretary. He has been the Synod attorney since 1988 and has also represented Lutheran and non-Lutheran congregations and other synods in a variety of employment and corporate matters. Steve also serves as outside counsel for the ELCA's churchwide organization with regard to personnel matters.

Steve and his wife, Linda, are members of Grace Lutheran Church in Grafton. Steve serves as a Director of United Lutheran Program for the Aging, Inc. and of Family Promise—Ozaukee County, Inc.



### **Rev. Adam Moreno, Morning Devotions**

With degrees in education and divinity, over a decade of teaching experience, and 20 years of youth ministry experience within the ELCA, Adam is passionate about lifelong learning and seeking to live an intentionally faith-focused life. His love of working with young people led him into a life of innovative teaching and dynamic mentoring; as the middle school Drama teacher at University School of Milwaukee, during the summers at Red Arrow Camp for Boys and Appel Farm Summer Arts Camp, and with the children and teens at Higher Expectations Theatre. Adam is active in the Synod, collaborating with past Winter Youth Retreats and participating on the Reconciling In Christ committee and the Cross+Gen Ministry Network. Pastor Adam is able to unite his passion for teaching and his call to ministry in serving as the pastor of Lord of Life Lutheran Church in Kenosha, an inclusive and faith-filled congregation with strong Children, Youth, and Family Ministries.



### **Savanna Sullivan, ELCA Churchwide Representative**

Savanna is Program Director for ELCA Young Adult Ministries at the ELCA Churchwide Office in Chicago, IL. She has given workshops and presentations around the country to ELCA and ecumenical groups about Young Adult culture and empowerment in the church. She recently spoke at the 2018 ELCA Youth Gathering in Houston, TX. She is passionate about helping young people seek the Divine in themselves and pushing the church to equip, amplify, and respect the voices of young leaders. She loves banana pudding, the Clemson Tigers, and memorizing poems.

## **SPEAKER BIOGRAPHIES**



### **Mike Ward, Feasibility Study**

Mike Ward is passionate about stewardship and how it can lead to renewal in the church. Mike is a Lutheran pastor as well as a Certified Fundraising Executive (CFRE) and is now a partner in the consulting firm GSB. Mike works with congregations and church institutions all across the country and across denominations. Mike's clients include small startups that are just launching annual fund programs to established large institutions pondering multi-phase major appeals. Mike also works eight church judicatories in planning, capital campaign, or in re-imagining regular funding streams as mission support continues to decline. He currently serves on the ELCA Church Council and was previously on the board of the ELCA Youth Ministry Network. Two of Mike's outdoor ministry clients are LCMS. GSB has launched a congregational stewardship model, currently being piloted here in Milwaukee, that is experiencing annual giving increases of 10%-40% on average. Prior to joining GSB, Mike was VP of Advancement for NovusWay Ministries and prior to that served as youth and family pastor at St. Mark's Lutheran Church, Charlotte. Mike is a frequent speaker at the Youth Ministry Extravaganza, Lutheran Outdoor Ministry Network,

and at the Association of Lutheran Development Executives conferences and recently led a Wheat Ridge Webinar. Mike lives near Asheville, NC with his wife and two children. In his free time, Mike is a beekeeper. [www.gsbfundraising.com/mike\\_ward/](http://www.gsbfundraising.com/mike_ward/)

## **REPORTS**

### **Report of the Bishop**

Found here: <http://bit.ly/2EE23Ff>

### **Report of the Vice President**

Found here: <http://bit.ly/2ED2gs5>

### **Report of the Secretary**

Found here: <http://bit.ly/2QuYLZA>

### **Report of the Treasurer**

Found here: <http://bit.ly/2HGg1s3>

# RULES AND PROCEDURES 2019

## Memorials and Resolutions Explained

The Evangelical Lutheran Church in America provides three primary avenues for communication from synods to the churchwide organization and the Churchwide Assembly, using two vehicles, memorials and resolutions. The three avenues are:

- 1) Synod Assemblies may address the Churchwide Assembly through memorials;
- 2) Synod Councils may address the ELCA Church Council through resolutions, and;
- 3) Synod Councils may address churchwide units or offices through the ELCA Church Council's Executive Committee (including forwarding resolutions adopted by Synod Assemblies).

**Memorials** address broad policy issues and are passed by Synod Assemblies for consideration by the Churchwide Assembly. Once received by the churchwide organization, they are referred to the Memorials Committee, which is appointed by the Church Council to review and make recommendations to the Churchwide Assembly. The Memorials Committee meets after all Synod Assemblies are over, approximately six to eight weeks before the Churchwide Assembly. It is important to note that the next Churchwide Assembly takes place in 2019, with subsequent Assemblies every third year.

**Resolutions** are requests from synods to the Church Council or units or offices of the churchwide organization. Either Synod Assemblies or Synod Councils may originate resolutions. As a practical matter, resolutions have a more narrow focus than memorials because they are requests for consideration or action by individual units or offices or the Church Council. Thus, for example, a request for the Church Council to recommend a parliamentary rule or action by a unit would be the subject of a resolution, but a request to change an ELCA policy should be a memorial.

A resolution and a memorial may *not* be combined in one action. In addition, a synod should not address both the Church Council and the Churchwide Assembly on the same subject. The Office of the Secretary, with the concurrence of the Executive Committee of the Church Council, may treat a proposal characterized as a memorial as a resolution or vice versa. In these circumstances, the synod will be notified promptly of the re-classification.

It also is important to point out that resolutions and memorials may *not* direct the churchwide organization to take action. They are proposals *requesting* the specified action.

Finally, an increasing concern of the churchwide organization is the potential budgetary impact of resolutions and memorials that make financial demands on synods or the churchwide organization. Resolutions or memorials that have such potential impact may not be supported by the churchwide organization or, if adopted, may have adverse consequences for existing programs or ministries.

**Resolutions calling for synod action** are also in order at the Synod Assembly. These generally will address policy concerns, where the entity presenting the resolution is asking for a particular policy or action by the synod.

## Overview

The Greater Milwaukee Synod Council will recommend to the Synod Assembly the following Rules and Procedures for 2019. These will be formalized by the Assembly at the Opening Plenary Session of the Assembly, on Saturday, June 1, 2019, but will be followed prior to that action.

### I. Memorials and Resolutions

- A. Deadlines for submission of memorials and resolutions:
  - Sunday, March 31, 2019 by congregations, committees or clusters;
  - Thursday, May 16, 2019 for Synod Council initiated resolutions.

## RULES AND PROCEDURES 2019

- B. Memorials and resolutions may only be submitted by vote of a cluster, a committee of the synod, or a congregation (by council or congregational vote), or by action of the Synod Council.

Memorials and resolutions that conflict with the governing documents of the ELCA are “improper motions” and will not be considered.

The memorials and resolutions that meet these criteria are included in the Pre-Assembly materials. Anyone seeking to have additional memorials or resolutions considered may only do so by moving a suspension of the rules for the purpose of considering that memorial or resolution. Such a motion requires a two-thirds vote to carry.

- C. By synod council action (SC98.05.02), memorials or resolutions, when called onto the agenda, must be moved by a member of the Assembly acting as a sponsor, who would then be the first individual to speak in favor of the memorial or resolution after its reading by the chair of the Reference and Counsel Committee.

- D. Speeches from the floor during debate shall be limited to three (3) minutes. In the event of anticipated prolonged debate, the chair may declare (or an assembly move as a matter of procedure) that speeches will be made in alternating order between supporting and opposing views. This is consistent with the 2016 Churchwide Assembly Rules of Organization and Procedure, which state in part:

“Insofar as is possible during discussion, a speaker on one side of the question shall be followed by a speaker on the other side.”

To facilitate alternating speeches, and when requested by the chair, Assembly members shall await recognition at the microphones, holding aloft a green placard in order to speak in favor of the pending matter, a red placard in order to speak against the pending matter, or a white placard in order to offer an amendment to the pending matter or to make some other motion that would be in order.

- E. All resolutions submitted by the deadline will be reviewed for editing, clarity and consistency prior to submission to the Reference & Counsel Committee. Those submitting resolutions should avoid, if at all possible, the use of footnotes or links to the internet, which may be removed at the discretion of the Reference & Counsel Committee. Entities submitting resolutions calling for synod action should be aware that, given limited resources, some detailed plans for action may not be feasible, and may not be supported by the Reference & Counsel Committee. Resolutions that would have the effect of increasing budgetary items without recommending corresponding decreases in other budgetary items will be ruled “out of order,” consistent with Rule VII below.

## **II. Motions**

- A. When a member intends to bring a motion (whether a main motion, a secondary motion, or a motion to bring a question again before the assembly), the motion must be made and seconded, if applicable, before speaking to the issue. If a member speaks to a matter before bringing the motion, the motion will be considered out of order by the chair. Once the motion is properly made and seconded, if applicable, the member who made the motion shall have the privilege of speaking first in support of it, upon recognition by the chair.

## **RULES AND PROCEDURES 2019**

- B. All motions amending a memorial or resolution must be presented to the chair of the Assembly in writing, preferably in advance of making the motion or, if that is not possible, immediately after making the motion.

### **III. Voting**

- A. Voting, except for contested elections, may, at the discretion of the chair, be conducted either by voice or by the use of colored cards, which will be held aloft to vote in favor or in opposition to a motion, as directed by the chair. Voting for contested elections shall be by paper ballot.
- B. When a division of the house is ordered, the vote shall be by counting raised colored cards or by written ballot as directed by the chair. No division of the house is in order when a vote has been taken by written ballot.

### **IV. Elections**

- A. Nominees for the offices to be filled by Assembly action are listed in the Pre-Assembly materials. Additional nominations may be made from the floor at the Opening Plenary session for the Assembly. Anyone wishing to place a name in nomination must:
  - 1. Have the nominee's consent to run and serve if elected, and
  - 2. Submit to the Assembly office the required biographical data at the time of nomination.
- B. A majority vote shall be required for election. In the event that no majority is attained on the first ballot, the names of the two candidates receiving the highest number of votes shall be listed on the second ballot. In the case of groupings of nominees, twice the number of candidates to be elected shall advance to the next ballot. The first ballot will be taken as close to the First Plenary Session as feasible. A second ballot shall be taken, if necessary, within 24 hours.

### **V. Privilege of Voice**

Guests, other than voting members, may be accorded the privilege of voice by a majority vote. Voice shall also be granted to those persons designated by the Synod Council, as provided for in S7.23. of the Synod's Constitution.

### **VI. Distribution of Materials**

No materials may be distributed on the floor of the assembly without the advanced approval of the bishop or the Reference and Counsel Committee of the Assembly.

### **VII. Changing Synod Budget Amounts on Assembly Floor**

All motions will be ruled "out of order" that seek to amend the synod budget by increasing the amount or percentage of any budget item or program in a Synod Council recommended synod budget which is to be considered on the floor of the assembly, without also proposing a dollar for dollar matching decrease in another budget item or program. For an amendment to the synod budget to be considered by the Assembly, the amendment to the synod budget must result in the total final income and expense amounts being exactly the same as proposed by the Synod Council for adoption by the assembly.



# VISION, MISSION, VALUES, PRACTICES STATEMENT

## Greater Milwaukee Synod Vision, Mission, Values, Practices statement: (May 2019)

The Greater Milwaukee Synod (bishop, staff, pastors, deacons, leaders, congregations, and ministries) embrace the following statements that express our common commitment to living into God's vision for our world.

God's Vision: A world that embodies the fullness of life: justice, peace, equity, hope, and love for everyone, including all races, genders, identities, abilities, and social status.

Our Mission: We follow Jesus, form communities, love all.

### Core Values:

- Curiosity. We believe that God is always up to something new, working to bring people together from diverse contexts to experience resurrection, hope, and community. Our task is to wonder and explore as the Holy Spirit moves among us. (Acts 2:1-24)
- Courage. We believe that God is inviting us to explore new ways of being church, re-examining familiar structures, beliefs, and practices, that we might experience the rich and full life that God intends for all creation. (Isaiah 42:5-9)
- Compassion. We believe that Jesus' command to love God and our neighbors needs to guide everything we do as we form communities of grace, welcome, service, and justice. (Luke 10:25-37)
- Collaboration. We believe that, just as God walks with us in our journey of faith, God invites us to walk with and work with each other and with our neighbors in relationships of authentic mutuality and equity. (Ephesians 4:1-16)

### Common Practices:

- Worship. We regularly respond to the Holy Spirit's invitation to meet God through Word and Sacrament, experiencing God's saving love in Christ and being sent into the world to share that love.
- Prayer. We ground all that we do in prayer, calling on God's Spirit to bless, strengthen, and shape us for witness and service.
- Listening. We seek to listen to and learn from God's Word, each other, our neighbors near and far, and the world around us, asking deep questions and being open to new voices and new perspectives.
- Invitation. We actively invite others into deeper relationships with Jesus, welcoming them into communities shaped by unconditional love and acceptance.
- Learning. We strive to be learning communities, committed to a deepening engagement with scripture and theology as well as training that equips us to live out our faith in the world and confront racism and discrimination of all kinds.
- Generosity. We open our lives to the free sharing of ideas and resources with all, recognizing that everything belongs to God.
- Innovation. We know that the Church and our world are changing, and we need to take risks and explore new ways of being faithful, building relationships, and organizing our life together.
- Leadership development. We support and encourage new people into leadership roles, focusing on those who have often been overlooked and undervalued.
- Showing up. We live out our faith by engaging in service, action, and advocacy around issues of poverty, violence, racial equity, gender, LGBTQIA+ issues, immigration, mental illness, and injustice.

## **REFERENCE AND COUNSEL COMMITTEE REPORT**

The Greater Milwaukee Synod 2019 Reference and Counsel Committee met on May 1, 2019 to review submitted resolutions.

### **Members Present**

Bishop Paul Erickson, Greater Milwaukee Synod  
Rev. Harvard Stephens, Belle City Cluster  
Jeffrey Kehoe, Kenosha/West Racine Cluster  
Pete Klatt, Lake Country Cluster  
Nancy Groethe, Milwaukee Cluster 1  
Rev. Logan Vang, Milwaukee Cluster 2  
Rev. Bill Mains, Milwaukee Cluster 3  
Justin Kierzek, Milwaukee Cluster 4  
Connie Hoffman, Northern Lakeshore Cluster  
Rev. Drew Yoos, Northwest Cluster

### **Member Not Present**

Karen Simington, Waukesha Cluster

### **Others Present**

Joyce Caldwell, Synod Vice President  
Matthew Brockmeier, Synod Secretary  
Steve Knowles, Synod Attorney

### **Actions**

The committee elected Jeffrey Kehoe to serve as chair.

### **Resolutions Considered**

---

#### **Resolution 1 – Memorial on Gun Violence Prevention**

**Meeting Review:** The committee accepted a recommendation from the secretary to consolidate multiple Resolved statements into one. There were no additional concerns.

**Subsequent Actions:** The sponsors accepted the revisions to the Resolved section.

#### **Resolution 2 – Resolution on the Opioid Crisis**

**Meeting Review:** The committee made minor technical corrections, with no significant concerns.

**Subsequent Actions:** No additional action was needed.

#### **Resolution 3 – Memorial on Increasing Participation and Awareness in Social Purpose Funds for All Portico Members**

**Meeting Review:** Discussion focused on the best path for this memorial, in light of Portico's relationship with the ELCA.

**Subsequent Actions:** Bishop Erickson, Matthew Brockmeier and Steve Knowles conducted additional review, with a recommendation to create an additional Whereas statement referring to the ELCA's governing documents, and amending the Resolved statement. The sponsors accepted the recommended revisions.

## **REFERENCE AND COUNSEL COMMITTEE REPORT**

### **Resolution 4 – Resolution Ensuring Parental Leave and Increasing Minimum Guidelines**

**Meeting Review:** There were significant concerns regarding both employment law and the nature of the relationship between synods and congregations, with special attention to concern regarding language appearing to create an expectation that congregations would adhere to the terms of the resolution.

**Subsequent Actions:** A meeting was held with the author, the bishop and several committee members and additional consultation took place with the synod attorney, with resulting changes in language, and the inclusion of a plan to develop a model policy for congregations to facilitate the aims of the resolution.

### **Resolution 5 – Resolution to Support Humanitarian aid to Palestinians through the East Jerusalem Hospitals including Augusta Victoria Hospital**

**Meeting Review:** The committee had no concerns, with appreciation expressed for the timeliness of this resolution.

**Subsequent Actions:** The ELCA began an advocacy effort largely mirroring what was called for in this resolution shortly after the meeting. Review by sponsors, with a recommendation by the synod to redirect the action to focus on support for the ELCA's effort. The sponsors decided to proceed with the original memorial, after asking whether the memorial could be combined with a synod-focused resolution, which is not possible under ELCA rules.

Respectfully Submitted,  
Jeffrey Kehoe, Chair

## **RESOLUTIONS**

### Resolution 1 – 2019 Greater Milwaukee Synod Assembly Memorial on Gun Violence Prevention - Revised

---

WHEREAS, the ELCA remains unalterably opposed to violence in our communities and committed to our Christian role as peacemakers; and

WHEREAS, mass shootings have continued to increase in the United States since the last Social Policy Resolution on Gun Violence Prevention was passed in 2016; and

WHEREAS, the Congress of the United States failed to pass the Assault Weapons Ban bill of 2018; and

WHEREAS, we have watched a rising wave of young people and parents in our country who are advocating for stricter gun regulation laws in order to create safe schools and safe neighborhoods, therefore, be it

**RESOLVED**, that the Greater Milwaukee Synod Assembly memorialize the 2019 Churchwide Assembly of the Evangelical Lutheran Church in America to encourage bishops, pastors, and Lutheran leaders to urge Congress and state legislatures to pass an assault weapons ban to replace the assault weapons ban that expired in 2004, this ban to include assault-like rifles and high-capacity magazines and to pass laws for strict background checks for all gun sales, including private sales; and to urge members of this church to contact their elected leaders through phone calls, letters, e-mails, and petitions, urging them to pass such legislation.

---

#### ***Submitted by United Lutheran Church, Racine***

*Co-sponsored by Kenosha and Racine Cluster members: Rev. Cindy Aasen, St. Paul's/Spirit Alive, Kenosha; Mr. John Anderson, Lutheran Church of the Resurrection, Racine; Rev. Jonathan Barker, Grace Kenosha; Rev. John Bischoff, United Lutheran, Racine; Mr. Karl Erickson, ELCA Outreach Center; Rev. Allison Johnson, Journey in Faith, Racine; Rev. Jim Lynch, St. Johns / Holy Nativity, Kenosha; Rev. Karen Pahl, Lutheran Church of the Resurrection, Racine; Rev. Sheila Rawn, St. Mary's, Kenosha; Rev. Harvard Stephens, Lutheran Church of the Redeemer, Kenosha; Rev. Beth-Ann Stone, Mt. Pleasant, Racine; Mr. David Ulrich, St. Marys Kenosha; and Rev. Krista Zimmerman, Mt. Pleasant, Racine.*

## RESOLUTIONS

### Resolution 2 – 2019 Greater Milwaukee Synod Assembly Resolution on the Opioid Crisis - Revised

---

WHEREAS, Jesus sends us forth to “heal the sick” (Matthew 10:8); and

WHEREAS, as declared in its “Statement of Purpose”, the Evangelical Lutheran Church in America must “lift its voice in concord and work with forces for good, to serve humanity, cooperating with church and other groups participating in activities that promote justice, relieve misery and reconcile the estranged” (Section 4.03(f) of the ELCA Constitution); and

WHEREAS, every day, more than 130 people in the United States die after overdosing on opioids (National Institute on Drug Abuse, “Opioid Overdose Crisis”, <https://www.drugabuse.gov/drugs-abuse/opioids/opioid-overdose-crisis>, revised Jan. 2019), causing misery for a vast network of victims and their families and communities; and

WHEREAS, the misuse of, and addiction to, opioids — including *prescription pain relievers*, *heroin*, and synthetic opioids such as *fentanyl* — is a serious national crisis that affects public health as well as social and economic welfare, so much so that the Centers for Disease Control and Prevention estimates that the total economic burden in the United States of prescription opioid misuse alone is \$78.5 billion per year, including the costs of healthcare, lost productivity, addiction treatment, and criminal justice involvement (National Institute on Drug Abuse, “Opioid Overdose Crisis”, <https://www.drugabuse.gov/drugs-abuse/opioids/opioid-overdose-crisis>, revised Jan. 2019): and

WHEREAS, during the year 2017, there were 916 overdose-related deaths in the State of Wisconsin, more than twice the number of such deaths during the year 2010 (Wisconsin Department of Health Services, <https://www.wisconsin.gov/wish/opioid/data.htm>), including a four-fold increase in heroin deaths during that period of years (National Institute on Drug Abuse, <https://www.drugabuse.gov/drugs-abuse/opioids/opioid-summaries-by-state/wisconsin-opioid-summary>); and

WHEREAS, in the year 2017, the President of the United States directed his Administration “to use all appropriate emergency and other authorities to respond to the crisis caused by the opioid epidemic (Presidential Statement, August 10, 2017); and

WHEREAS, the Governor of the State of Wisconsin created the Governor’s Task Force on Opioid Abuse (Executive Order #214, Sept. 22, 2016) and subsequently convened, in multiple locations, a Governor’s Faith-Based Summit on Opioids for pastors, priests, parish nurses, and others involved in faith-based community organizations confronting the prevention, intervention, recovery, and criminal justice consequences of the Opioid Crisis (Executive Order # 273, Jan. 19, 2018); and

WHEREAS, the churchwide organization of the ELCA declares, “The work God calls us to do in the world is never done alone or in isolation, and the churchwide organization plays a key role in developing and supporting a culture of interdependence, diversity and common mission across all expressions of the ELCA and its partners” (<https://elca.org/About/Churchwide>); therefore, be it

**RESOLVED**, that the Greater Milwaukee Synod Assembly direct the Synod Council to respond to the opioid crisis by creating a Synod Task Force on Opioid Abuse to advise how synod leaders



## RESOLUTIONS

### Resolution 2 – 2019 Greater Milwaukee Synod Assembly Resolution on the Opioid Crisis - Revised

---

and congregations can collaborate and form effective partnerships with state and local authorities and nongovernmental organizations; and be it further

**RESOLVED**, that the Bishop of the Greater Milwaukee Synod appoint members of the Synod Task Force on Opioid Abuse, to include Synod staff, pastors, and lay leaders (especially those with experience-based perspectives) and task a synod staff member with responsibility to support the Task Force; and be it further

**RESOLVED**, that participants in the Synod Task Force on Opioid Abuse include those most vulnerable in this crisis — young people, people of color, people who identify among LBGTQIA+, people who have been in prison or jail, military veterans, and people from other groups that are disproportionately affected by this crisis; and be it further

**RESOLVED**, that the Synod Task Force on Opioid Abuse encourage practical ways for rostered leaders and congregations to bring hope and healing to those affected by the crisis, and in so doing consider the actions suggested by the Center for Faith Based and Neighborhood Partnerships in its Opioid Epidemic Practical Toolkit, including

- Hosting or connecting people to recovery programs and support groups (*Open Your Doors*)
- Providing educational opportunities that create understanding and encourage compassion (*Increase Awareness*)
- Offering training programs to build the capacity of communities to respond (*Rebuild and Restore*)
- Focused efforts on youth prevention (*Get Ahead of the Problem*)
- Joining substance-use prevention coalitions, so as to inform, connect, and strengthen efforts (*Connect and Collaborate*)

and help congregations to be informed about federal, state, and local resources available, and be it further

**RESOLVED**, that the Greater Milwaukee Synod Assembly direct the bishop of the Greater Milwaukee Synod to share this resolution with the presiding bishop of the ELCA and the appropriate staff people in the Domestic Mission Unit of the churchwide organization of the ELCA and to explore with them the formation of a churchwide task force that would provide information, networking, and support for ministries dedicated to combating opioid addiction and abuse.

---

#### ***Submitted by Clusters 1 and 2, Milwaukee***

*Authors: Rev. Molly Doreza, Bay Shore Lutheran & Rev. Joseph Ellwanger, Hephatha Lutheran*

*Co-sponsored: Rev. Delaney Schlake-Kruse, St. Paul's; Rev. Mary Martha Kannass, Hephatha Lutheran; Rev. Kevan Penvose, Unity Lutheran; Rev. Marilyn Miller, Lutheran Church of the Reformation; Rev. Mark Thompson, Breaking the Chains; Rev. Michelle Townsend de Lopez, Cross Lutheran; Rev. Dr. Lisa Bates-Froiland, Redeemer Lutheran; Rev. Alexis Twito*

## RESOLUTIONS

### Resolution 3 – 2019 Greater Milwaukee Synod Assembly Memorial on Increasing Participation and Awareness in Social Purpose Funds for All Portico Members - Revised

---

WHEREAS, that currently new Portico Benefit Services members are automatically enrolled in the ELCA 60e Balanced Fund; and

WHEREAS, according to an email sent by Portico to plan members on February 2, 2017 “about 45% of plan members have all of their ELCA Retirement Plan savings invested in the plans default fund, the ELCA 60 e Balanced Fund,”; and

WHEREAS, that some plan members who were automatically enrolled in the ELCA 60 e Balanced Fund have no preference for what plan they are enrolled in or do not know how to make an enrollment selection; and

WHEREAS, the ELCA 60e Balanced Fund is partially invested in alcohol, business practices that negatively impact community development, fossil fuels and business practices that degrade the environment, gambling, military weapons, pornography, and tobacco, and private prisons (including the companies that operate the private prisons that held immigrant children separated from their parents); and

WHEREAS, the ELCA already has created alternative funds, the eight ELCA Social Purpose Funds, screens (does not invest in) investments in alcohol, business practices that negatively impact community development, fossil fuels and business practices that degrade the environment, gambling, military weapons, pornography, and tobacco, and private prisons; and

WHEREAS, the ELCA Social Purpose Funds positively invests in activities that promote: community development, affordable housing, sustainable forestry, women- and minority-owned businesses, and clean energy and the environment; and

WHEREAS, the ELCA Social Purpose Funds are in alignment with our biblical tradition that encourages us to seek the welfare of our communities. (See Jeremiah 29:4-7); and

WHEREAS, the ELCA Social Purpose Funds are in alignment with our biblical tradition that teaches us to love our neighbor. (See Luke 10:25-37); and

WHEREAS, Continuing Resolution 17.20.B11 of the governing documents of the ELCA states that “The Corporate Social Responsibility Committee of the Board of Pensions shall receive advice and counsel from the churchwide organization and, within the context of fiduciary responsibility for ELCA assets, make appropriate recommendations to the board”; therefore, be it

**RESOLVED**, that the Greater Milwaukee Synod Assembly memorialize the 2019 Churchwide Assembly of the Evangelical Lutheran Church in America to recommend that Portico Benefit Services conduct a campaign designed to increase awareness of and participation in their Social Purpose investment funds by plan members, reporting annually to the ELCA Church Council on the status of this effort.

---

*Submitted by Grace Lutheran Church, Kenosha and the Kenosha/West Racine Cluster.*

## RESOLUTIONS

### Resolution 4 – 2019 Greater Milwaukee Synod Assembly Resolution Encouraging Parental Leave Policies in Congregations - Revised

---

WHEREAS, all Christians are called to care for their family members and fellow members of the Body of Christ; and

WHEREAS, the Confessions of the Evangelical Lutheran Church name care for one's family as a Christian's first vow, with precedence over any monastic or clerical vows (Apology of the Augsburg Confession, XXVII:67-68); and

WHEREAS, the current Greater Milwaukee Synod Compensation Guidelines state, "Congregations are expected to provide for a paid parental leave of up to six weeks for the birth, adoption or pre-adoption placement of a child with full salary, housing and benefits"; and

WHEREAS, the ELCA document, "Definition of Compensation, Benefits, and Responsibilities for Ministers of Word and Sacrament Under Call" that is to be completed when a new call is issued states, under D. Agreement, item 6. "Maternity/Paternity or Adoptive leave of \_\_\_\_ weeks with full salary, housing, and benefits (Recommended 6 weeks; 4 weeks minimum)" and

WHEREAS, the National Partnership for Women and Families reports that "parental leave allows new parents time to care for their children--giving them the best chance at a healthy start on life"; and

WHEREAS, the ELCA draft of the "Social Statement on Faith, Sexism, and Justice" suggests: "Finally, this church needs to offer greater support for women's ministry and leadership in policies related to pregnancy, parental leave, and breastfeeding. Improved arrangements for ELCA rostered leaders and for employees of ELCA-related organizations and institutions should support these leaders and demonstrate this church's commitment to family"; and

WHEREAS, it is necessary for all rostered ministers of the ELCA to have the support they need to respond to God's call to serve the church; therefore, be it

RESOLVED, that the congregations of the Greater Milwaukee Synod are encouraged to adopt policies providing eight weeks of parental leave with full salary, housing, and benefits for ministers of Word and Sacrament and ministers of Word and Service, such leave to be available in connection with the birth, adoption, or pre-adoption placement of a child and such leave to be available without regard to the sexual orientation or marital status of the rostered ministers eligible for the leave and without regard to the cognitive or physical abilities of a child being welcomed; and be it further

RESOLVED, that the Greater Milwaukee Synod staff be intentional in talking with call committees, congregation councils, and Mission Exploration Teams to encourage congregations in the Greater Milwaukee Synod to adopt parental leave policies in place prior to issuing any call(s); and be it further

RESOLVED, that the Greater Milwaukee Synod staff shall work with the synod attorney, in consultation with rostered ministers and lay leaders, to develop a model policy for parental leave that, upon approval by the synod council, will be made available to congregations in the synod for consideration and adoption.

## **RESOLUTIONS**

### Resolution 4 – 2019 Greater Milwaukee Synod Assembly Resolution Encouraging Parental Leave Policies in Congregations - Revised

---

---

#### ***Submitted by Milwaukee Clusters 1 and 2***

*Co-sponsored by Rev. Delaney Schlake-Kruse, St. Paul's; Rev. Lindsey Beukelman, All Peoples; Rev. Alissa Kretzmann Farrar, Lake Park; Rev. Mary Martha Kannass, Hephatha; Rev. Donna Brown, Village; Rev. Kevan Penvose, Unity; Carolyn Karl, Kingo; Rev. Marilyn Miller, Reformation; Rev. Joseph Ellwanger, Hephatha; Rev. Mark Thompson, Breaking the Chains; Rev. Michelle Townsend de Lopez; and Rev. Dr. Lisa Bates-Froiland, Redeemer.*

## **RESOLUTIONS**

### Resolution 5 – 2019 Greater Milwaukee Synod Assembly Resolution to Support Humanitarian Aid to Palestinians through the East Jerusalem Hospitals including Augusta Victoria Hospital

---

WHEREAS, we followers of Christ are called by God in our baptismal covenant to work for justice and peace on the earth; and

WHEREAS, the 2019 ELCA Advocacy Policy Priorities includes a commitment to “... work to build broad support for international development and humanitarian aid in Congress. Specifically, we will: • Advocate to bolster funding levels to international poverty-focused programs as appropriate in the International Affairs budget; • Oppose efforts by Administration or Congress to cut funds to these programs...”; and

WHEREAS, The United States Government has historically provided direct aid to the Palestinian Authority, through the US Agency for International Development (USAID) and other agents; and

WHEREAS, This aid was severely cut in 2018, and as a result of the Anti-Terrorism Clarification Act legislation enacted in 2018, which amends that Anti-Terrorism Act. The Anti-Terrorism Clarification Act as written may result in no aid being provided to the Palestinian people by the United States in the future and have a devastating effect on life-saving services affecting over 5 million Palestinians in Gaza and the West Bank; and

WHEREAS, One of the institutions directly affected by the cuts is Augusta Victoria Hospital (AVH), a program of the Lutheran World Federation, which is a center of medical excellence in East Jerusalem, providing specialty care for all Palestinians in the West Bank and Gaza that is not available in other hospitals; and

WHEREAS, For several years AVH and other East Jerusalem hospitals have been facing cash-flow problems because the Palestinian Authority has not been able to pay the bills of the patients which it refers to these hospitals, with total debt for the six hospitals at \$80 million as of March 1, 2019, with AVH debt of \$35 million; and

WHEREAS, in FY2017, \$25 million in US funding was appropriated by Congress for the hospitals but later repurposed by the Administration and therefore permanently lost to the hospital; and

WHEREAS, future funding is now in doubt because of restrictions placed on aid by the Anti-Terrorism Clarification Act; therefore, be it

RESOLVED, that the Greater Milwaukee Synod Assembly memorialize the 2019 Churchwide Assembly of the Evangelical Lutheran Church in America to request Presiding Bishop Elizabeth Eaton, synodical bishops, and congregations and members of congregations, to request the President of the United States and all applicable legislators to restore the FY2018 funding to the East Jerusalem Hospitals, to continue funding at 2018 levels until the Israeli/Palestinian conflict is resolved, and to amend the Anti-Terrorism Clarification Act of 2018 to remove legislative barriers to future funding of US humanitarian assistance to West Bank, Gaza and East Jerusalem.

---

*Submitted by Milwaukee Clusters 1 and 2*



## NOMINATIONS

CONSULTATION COMMITTEE – AT LARGE – LAY MALE– VOTE FOR ONE (PARTIAL TERM: SYNOD ASSEMBLY 2019 - 8/31/2021)

CONSULTATION COMMITTEE – AT LARGE – CLERGY– VOTE FOR TWO (TERM: 9/1/2019 - 8/31/2025)

CONSULTATION COMMITTEE – AT LARGE – LAY FEMALE– VOTE FOR ONE (TERM: 9/1/2019 - 8/31/2025)

CONSULTATION COMMITTEE – AT LARGE – LAY MALE– VOTE FOR ONE (TERM: 9/1/2019 - 8/31/2025)

SYNOD SECRETARY – AT LARGE – VOTE FOR ONE (TERM: 9/1/2019 - 8/31/2023)

**Name:** Rev. Matthew Schlake-Kruse

**Congregation:** St. Matthew's, Wauwatosa

**Racial/Ethnic Group:** European American

**Current Employment:** Associate Pastor

**Education:** B.A. Religion/Economics, Augustana SD; M.Div Trinity Lutheran Seminary

**Church Service:** Board Member and chair, Lutheran Campus Ministry 2014-2019; ELCA Churchwide Voting Member 2016; Synod Assembly Planning Team (South Central & GMS), most recently 2017-19

**Community Service:** Cabinet Secretary and Board Member, Interfaith Conference of Greater Milwaukee 2015 - Present; Election Judge, City of Wauwatosa, 2015-2018; Columbia County Community Builder Award Recipient, 2009-10

SYNOD COUNCIL – AT LARGE – CLERGY – VOTE FOR ONE (TERM: 9/1/2019 - 8/31/2023)

**Name:** Rev. Kevin Kretzmann Farrar

**Congregation:** Atonement, Muskego

**Racial/Ethnic Group:** European American

**Current Employment:** Associate Pastor

**Education:** M.A. Luther Seminary; M.Div Yale Divinity School

**Church Service:** Waukesha Cluster Representative, Greater Milwaukee Synod Council November 2018-present; Convener, Associate Pastor Gathering, Greater Milwaukee Synod February 2019 - present; Intern, Westwood Lutheran Church, St. Louis Park MN August 2016-July 2017

**Community Service:** Lutheran Student Organization Co-President, Yale Divinity School August 2014 - May 2016; St. Olaf College Black and Gold Corps Student Ambassador August 2009-May 2011; Council of Churches in Namibia Intern August 2010-November 2010

**Name:** Rev. Karen A. Pahl

**Congregation:** Lutheran Church of the Resurrection, Racine

**Racial/Ethnic Group:** European American

**Current Employment:** Pastor

**Education:** Bachelors Degree Music Education, Business Administration; M.Div Lutheran Theological Seminary of the Southwest

**Church Service:** 2019 Update Synod Compensation and Guidelines Team; Synod Reference and Counsel Committee 2014; Children, Youth & Family Task Force, SE Minnesota Synod 2008-2012

**Community Service:** Sophia Community Organization 2014-2015; Healing Hearts of Waukesha County, Inc. Vice President and member 2014-2016

## NOMINATIONS

SYNOD COUNCIL – AT LARGE – LAY FEMALE – VOTE FOR ONE (TERM: 9/1/2019 - 8/31/2023)

SYNOD COUNCIL – AT LARGE – LAY MALE – VOTE FOR ONE (TERM: 9/1/2019 - 8/31/2023)

SYNOD COUNCIL – LAKE COUNTRY – LAY FEMALE – VOTE FOR ONE (TERM: 9/1/2019 - 8/31/2023)

SYNOD COUNCIL – MILWAUKEE 3 – CLERGY – VOTE FOR ONE (TERM: 9/1/2019 - 8/31/2023)

**Name:** Rev. Denise Mbise

**Congregation:** Trinity, South Milwaukee

**Racial/Ethnic Group:** European American

**Current Employment:** Pastor

**Education:** B.A. Carthage College; M.Div Luther Seminary; Non-profit Management Certificate UW-Milwaukee

**Church Service:** Lutherdale Bible Camp Board of Directors 2013-2016; Racine Cluster Dean 2007-2009; Diakonia Instructor 2011

**Community Service:** Mt. Meru Tumaini Health Clinic, Inc. President 2000 to present

SYNOD COUNCIL – MILWAUKEE 4 – LAY FEMALE – VOTE FOR ONE (TERM: 9/1/2019 - 8/31/2023)

SYNOD COUNCIL – WAUKESHA – LAY MALE, PERSON OF COLOR – VOTE FOR ONE (TERM: 9/1/2019 - 8/31/2023)

SYNOD COUNCIL – AT LARGE – YOUTH – VOTE FOR ONE (TERM: 9/1/2019 - 8/31/2021)

**Name:** Sara Booher

**Congregation:** Holy Cross, Menomonee Falls

**Racial/Ethnic Group:** European American

**Current Employment:** student

**Education:** High School student

**Church Service:** Youth Council, September 2018 to present; Faith Development Leader, 2015 – present; Vacation Bible School Volunteer, 2015 - present

**Community Service:** VP of Community Service Menomonee Falls HS Chapter of FBLA; Sophomore Class Advisor MFHS, 2018-2019; Mission Camp at Crossways Camps, 2016-2018

# BALANCE SHEET

## Greater Milwaukee Synod - ELCA

### Balance Sheet

Accrual Basis

As of January 31, 2019

	Jan 31, 19
<b>ASSETS</b>	
<b>Current Assets</b>	
Checking/Savings	
1000-00 · Net Operating Cash	
1000-01 · Cash & Equivalents	
1001-01 · Operating Checking A/C-Landmark	180,132.97
1001-03 · Landmark C.U. Money Market Plus	69,143.63
1010-01 · ELCA Endowment Fund A #272344	
1010-02 · Endowment Fund Valuation Allow.	-145.41
1010-03 · Income Distrb & Reinvested	20,697.97
1010-01 · ELCA Endowment Fund A #272344 - Other	185,000.00
<b>Total 1010-01 · ELCA Endowment Fund A #272344</b>	<b>205,552.56</b>
1104-00 · Petty Cash	160.24
1130-00 · Mission Investment Funds	
1130-01 · Demand Inv - 9180000337	576,662.38
1130-22 · Demand Inv-St Andrew-3000273977	141,949.01
1130-23 · Demand Inv-Good Shepherd-316412	126,707.78
1130-24 · Demand Inv-GMS Endow-MIF-003702	105,415.50
<b>Total 1130-00 · Mission Investment Funds</b>	<b>950,734.67</b>
<b>Total 1000-01 · Cash &amp; Equivalents</b>	<b>1,405,724.07</b>
1190-00 · Restricted Fund Balances	
1190-10 · Restrict Fund - Other Gifts	
1190-09 · Restrict Fund Pledges Receivable	-34,703.02
<b>Total 1190-10 · Restrict Fund - Other Gifts</b>	<b>-34,703.02</b>
1190-38 · Bishop's Discretionary Fund	-3,014.83
1190-40 · Restrict Fund GMS Ministry	
1190-37 · Restrict Fund Ken Wheeler Schl	66,661.00
1190-42 · Restrict Fund Evangelism	-29,625.03
1190-43 · Restrict Fund StewardshipSeason	-17,572.91
1190-44 · Restrict Fund New Missions	-24,737.46
1190-49 · Restrict Fund Leadership Develop	-35,791.29
1190-50 · Restrict Fund Coaching	-591.98
1190-53 · Restrict Fund Retired Pastors	-12,925.00
1190-59 · Restrict Fund Salary Retention	-81,674.65
1190-63 · Restrict Fund GMS Endowment Fnd	
1191-14 · Restrict Fund Urban Internship	-220,588.91
1190-63 · Restrict Fund GMS Endowment Fnd - Other	-40,335.90
<b>Total 1190-63 · Restrict Fund GMS Endowment Fnd</b>	<b>-260,924.81</b>
1190-70 · Restrict Fund Anti-Racism Trng	-13,525.35
1190-74 · Restrict Fund Young Adults	-15,125.22
1190-75 · Restrict Fund Care of Creation	-5,147.19
1190-76 · Restrict Fund Diakonia	-6,136.34
1190-77 · Restrict Fund Synod Assembly	-18,238.08
1190-81 · Restrict Fund Prison Ministry	-55,351.25
1190-91 · Restrict Fund Returning Veteran	-1,000.00
1190-93 · Restrict Fund RIC Task Force	-784.66
1190-95 · Restrict Fund Divine Word/Kingo	10,000.00
1190-98 · Restrict Fund Wellness-Portico	-31,008.44
1191-01 · Restrict Fund Cross+Generation	-11,638.13
1191-11 · Stewardship For All Seasons	-4,567.00
1191-12 · Restrict Fund Reformation 500 Yr	-4,350.18
1191-13 · Restrict Fund Table Worshiping C	-54,193.71

# BALANCE SHEET

## Greater Milwaukee Synod - ELCA

### Balance Sheet

Accrual Basis

As of January 31, 2019

	Jan 31, 19
1191-16 · Restrict Vibrant Faith - DEM Fd	-3,253.30
1191-17 · Seminary Student - Schaaf	-100,665.58
1191-18 · Restrict Wayfarers	588.30
Total 1190-40 · Restrict Fund GMS Ministry	-711,578.26
1190-60 · Restrict Fund Cluster 1&2	-4,699.47
1190-72 · Restrict Fund Meru	-70,765.45
1190-73 · Restrict Fund El Salvador	-38,333.86
Total 1190-00 · Restricted Fund Balances	-863,094.89
Total 1000-00 · Net Operating Cash	542,629.18
1190-97 · Rogers St Property-Church/House	-86,139.71
1190-99 · Restrict-St Andrew L/C, Waukesha	-203,226.49
Total Checking/Savings	253,262.98
Accounts Receivable	
1200-00 · Congregational Commitments	-792.04
1205-00 · Mtge Note Receivable-Rogers St	69,664.34
Total Accounts Receivable	68,872.30
Other Current Assets	
1350-00 · Prepaid Expenses	26,719.85
1401-00 · Due from Affiliates	3,480.00
1406-00 · Due from Outreach For Hope	1,826.96
1415-00 · MLC Hephatha Ministry Account	3,718.20
1424-00 · Due from LCM - Mlwk	418.68
1426-00 · Interest Receivable	290.27
1499-00 · Undeposited Funds	24,384.93
Total Other Current Assets	60,838.89
Total Current Assets	382,974.17
Fixed Assets	
1750-00 · Fixed Assets	
1752-00 · Office Equipment, Synod	42,717.00
1752-09 · Office Equipment Depreciation	-42,717.00
Total 1750-00 · Fixed Assets	0.00
Total Fixed Assets	0.00
Other Assets	
1600-00 · Pledges Receivable	
1601-00 · Pledges Receivable - Synod	30,665.58
Total 1600-00 · Pledges Receivable	30,665.58
Total Other Assets	30,665.58
TOTAL ASSETS	413,639.75
LIABILITIES & EQUITY	
Liabilities	
Current Liabilities	
Accounts Payable	

# BALANCE SHEET

## Greater Milwaukee Synod - ELCA

### Balance Sheet

Accrual Basis

As of January 31, 2019

	Jan 31, 19
2301-00 · Accounts Payable	6,185.72
Total Accounts Payable	6,185.72
Other Current Liabilities	
2305-00 · ELCA Office of Treasurer Pay	219,464.68
2427-00 · Flexible Spending Accounts/Cafe	-674.96
2429-00 · Tax Shelter Annuities	-669.47
2431-00 · Life Insurance	-772.72
2502-00 · Accrued Audit Fees	4,120.00
Total Other Current Liabilities	221,467.53
Total Current Liabilities	227,653.25
Total Liabilities	227,653.25
Equity	
3051-00 · Unrestricted Fund Balance	283,432.22
Net Income	-97,445.72
Total Equity	185,986.50
TOTAL LIABILITIES & EQUITY	413,639.75



## 2020 BUDGET PROPOSAL RATIONALE

### 2020 Budget Proposal Greater Milwaukee Synod

**Overview:** The Greater Milwaukee Synod council is recommending to the synod assembly a budget proposal for Fiscal Year 2020-21 that projects general mission support income (offerings received from congregations) at \$1.9 million, and total revenue of \$1.971 million. Total expenditures are projected to be \$2.043 million, resulting in a projected deficit of \$71,199. The most significant change from prior years is the reduction in the percentage of mission support received that we would share with the ELCA churchwide expression, from 55% to 52.5%.

**History:** The Greater Milwaukee Synod has historically been among the synods that share the highest percentage of mission support, and up until 2011, it varied between 60% and 62%. At the 2010 synod assembly, it was reduced in the 2011 synod budget to its current level of 55%. One other synod has its percentage at 55% (Northern Illinois), and the ELCA average is 49.5%.

Overall, mission support levels have been slowly declining, from a high of \$2.7 million in 2006-07 to a low of \$1.88 million in 2018-19. It is worthy of note, however, that designated giving by individuals and congregations in the synod to ELCA-related ministries (World Hunger, Missionary Support, Lutheran World Relief, Lutheran Disaster Response, and our synodical partnerships in Meru, Tanzania and El Salvador) have steadily increased, from approximately \$600,000 in 2009 to over \$1.3 million in 2018 (this figure includes the \$971,625 sent through the synod office and over \$330,000 sent directly to the ELCA Churchwide office by congregations and individuals).

**Rationale:** The synod currently has approximately \$217,000 in undesignated reserve funds. The projected deficit for this year, 2019-20, is \$103,000, reducing the reserve funds to approximately \$114,000 at the start of 2020. If we were to maintain our percentage of mission support shared at 55% for 2020, we would increase the projected deficit from \$71,199 to \$119,373, completely depleting our reserve funds. In order to maintain current synod staffing levels and our commitments to Lutheran Campus Ministry and our other ministry partners, the recommendation from the synod council is to reduce the percentage shared with the ELCA Churchwide expression to 52.5%.

## BUDGETS AND ACTUAL

Line #	Greater Milwaukee Synod	2018/19 Assembly Approved Budget	2018/19 Preliminary Actual	2019/20 Assembly Approved Budget	2019/20 Council Amended Budget	2020/21 Preliminary Budget Proposal
1	SUMMARY OF SYNOD MINISTRIES					
2	CONTRIBUTIONS AND SUPPORT					
3	Congregational Contributions/Support	2,000,000	1,883,108	2,000,000	1,900,000	1,900,000
4	Other Revenues:					
5	Siebert Grant-	25,000	26,750	30,000	30,000	30,000
6	Transfer from Designated Funds		4,131	10,000	10,000	10,000
7	DEM Grant - ELCA	10,000	10,000	10,000	10,000	10,000
8	Other Income **	3,000	4,699	3,000	3,000	10,000
9	Fees for Fiscal Services	1,500	-	1,500	1,500	1,500
10	Interest and Investment Income	8,000	9,861	8,000	8,000	10,000
11	Total Other Revenue	47,500	55,441	62,500	62,500	71,500
12	TOTAL CONTRIBUTIONS AND SUPPORT	2,047,500	1,938,549	2,062,500	1,962,500	1,971,500
13	ELCA Mission Support	1,100,000	1,033,096	1,100,000	1,045,000	997,500
14	ELCA Shared Risk	-	-	-	-	-
15	Lutheran School of Theology	28,800	27,048	28,800	27,360	27,360
16	Wartburg Seminary	28,800	27,048	28,800	27,360	27,360
17	Wisconsin Council of Churches	12,000	11,590	12,000	11,400	11,400
18	Wisconsin Chaplaincy Commission	440	-	440	440	440
19	Interfaith Conf. Of Greater Milwaukee	12,000	11,270	12,000	11,400	11,400
20	Native American Ministries	4,900	4,900	4,900	4,900	4,900
21	Hmong Ministry Conference	900	-	900	900	900
22	Lutheran Office for Public Policy	4,900	4,900	4,900	4,900	4,900
23	Luth. Outdoor Ministry- WI and Upper MI	5,900	5,900	5,900	5,900	5,900
24	Lutheran Volunteer Corp.	1,350	1,350	1,350	1,350	1,350
25	Region V Office	5,320	5,226	5,226	5,226	4,573
26	Lutheran Planned Giving Partnership	4,020	5,695	4,020	4,020	4,020
27	ELCA World Hunger	1,000	1,000	1,000	1,000	-
28	TOTAL PARTNERSHIPS	1,210,330	1,139,023	1,210,236	1,151,156	1,102,003
29	As a % of Congregational Contributions					
30	ELCA Mission Support	55.0%	54.9%	55.0%	55.0%	52.5%
31	Other Partnership Ministries	5.5%	5.6%	5.5%	5.6%	5.5%
32	Total	60.52%	60.49%	60.51%	60.59%	58.00%
33	SYNOD MINISTRIES					
34	Lutheran Campus Ministry	140,000	136,485	140,000	133,000	133,000
35	Committees' Programs and Mission	500	-	-	-	-
36	Communication Department	1,500	249	1,500	1,500	1,500
37	Synod Events		2,739			
38	Office of the Bishop	1,500	-	1,500	1,500	1,500
39	Cross Generational-Programs (Designated Funds)		2,763	10,000	10,000	10,000
40	Congregational Assistance & Sabbatical Support	1,500	1,338	2,000	2,000	2,000
41	Sabbatical Support to Congregations (Merged)	1,500	-	-	-	-
42	Candidacy Committee	6,000	1,774	6,000	6,000	6,000
43	Evangelism/New Mission Starts	5,000	174	5,000	5,000	5,000
44	Companion Synod Visits	4,000	735	4,000	4,000	4,000
45	Discipleship (Merged with Leadership Support)	3,000	-	-	-	-
46	Anti-Racism Training	8,000	11,318	8,000	8,000	8,000
47	Leadership Support Events (Siebert Grant part funded)	25,000	25,000	30,000	30,000	30,000

## BUDGETS AND ACTUAL

48	Additional Leadership Support Expenses	5,881			
49	Reconciling in Christ		1,000	1,000	5,000
50	TOTAL SYNOD MINISTRIES	197,500	188,456	209,000	202,000
51	TOTAL PARTNERSHIPS & SYNOD MINISTRIES	1,407,830	1,327,479	1,419,236	1,353,156
52	ADMINISTRATIVE MINISTRIES				
53	COMPENSATION & EMPLOYEE BENEFITS				
54	Salaries, Housing & Contract Service	440,000	439,853	442,000	442,000
55	Pension Contributions	45,000	42,541	46,000	46,000
56	Medical & Dental Insurance	115,000	75,049	115,000	85,000
57	Educational Benefits for Staff	6,000	4,287	6,000	6,000
58	Workers' Compensation	3,500	1,554	3,500	3,500
59	Staff Books & Subscriptions	1,000	265	1,000	1,000
60	Staff Dues & Registrations	2,000	788	2,000	2,000
		612,500	564,337	615,500	585,500
61	TRAVEL, HOSPITALITY & MEETINGS				
62	Synod Staff	21,000	22,365	23,000	23,000
63	Synod Council	750	756	750	750
64	Committee Members	250	-	250	250
65	Hospitality & Entertainment	4,000	2,644	4,000	4,000
		26,000	25,765	28,000	28,000
66	OFFICE EXPENSES				
67	Postage	3,000	2,114	2,400	2,400
68	Office Supplies & Other	5,000	5,193	5,000	5,000
69	Software Expense	2,000	3,141	2,000	2,000
		10,000	10,448	9,400	9,400
70	PURCHASED SERVICES				
71	Auditing Fees	12,000	12,740	12,000	12,000
72	Legal Fees	14,000	2,976	10,000	10,000
73	Web Hosting & Transaction Fees	500	1,597	500	500
74	Payroll Processing Fees	2,200	3,390	2,200	2,200
75	Sponsorships			1,200	1,200
76	Telephone & Communication Networks	8,200	9,639	8,200	8,200
		36,900	30,342	34,100	34,100
77	OTHER EXPENSES				
78	Office Insurance	4,500	4,308	4,500	4,500
79	Credit Card Fees and Miscellaneous	250	851	250	250
80	DEM Related Expenses		7,071		
		4,750	12,230	4,750	4,750
81	FURNITURE & FIXTURES				
82	Leased Equipment, Maintenance & Repairs	15,000	13,338	14,000	14,000
83	Furniture & Equipment Purchases	4,000	4,688	4,000	4,000
84	Office Equipment Depreciation	-	1,068	-	-
85	Facilities Expense Including Rent	35,500	32,913	32,600	32,600
		54,500	52,007	50,600	50,600
86	TOTAL ADMINISTRATIVE MINISTRIES	744,650	695,129	742,350	712,350
87	TOTAL MINISTRIES	2,152,480	2,022,607	2,161,586	2,065,506
88	INCOME ABOVE EXP.	(104,980)	(84,058)	(99,086)	(103,006)
89	Transfer from Undesignated Reserve Fund	104,980	84,058	99,086	103,006
90	NET INCOME OVER EXPENSES	0	(0)	0	0

\*\* - Other income is reimbursement money from other GMS related ministries to offset budgeted expenses.

# EXPLANATION OF BUDGETED INCOME AND EXPENSES

## EXPLANATION OF BUDGETED INCOME & EXPENSES

LINE #	DESCRIPTION	EXPLANATION
5	<b>Siebert Grants</b>	Grant received from Siebert Lutheran Foundation for Leadership Development Programs
7	<b>DEM Grant- ELCA</b>	Grant received from the ELCA to support the DEM in ministry.
8	<b>Other Income</b>	Reimbursed money from other GMS ministries to offset budget expenses
13	<b>ELCA Mission Support</b>	For every mission support (formerly called "benevolence") dollar the Greater Milwaukee Synod (GMS) receives from congregations, <b>55</b> cents is sent to the Evangelical Lutheran Church in America (Churchwide) and <b>45</b> cents remains in the synod to do ministry on behalf of congregations.
14	<b>ELCA Shared Risk</b>	Each of the 65 synods in the ELCA contributes to this fund as needed to defray legal expenses.
15	<b>LSTC and</b>	By sending dollars to the Lutheran School of Theology at Chicago and Wartburg Theological Seminary, Dubuque, IA, GMS helps to prepare people for rostered ministry and lay leadership.
16	<b>Wartburg Seminaries</b>	
17	<b>Wisconsin Council of Churches</b>	The WCC is a community of Christian denominations that covenant to engage in a common ministry focused on church unity, peacemaking, and social justice for Wisconsin's most vulnerable residents and revitalizing congregations. The Council encompasses 16 denominations with approximately 2,000 congregations.
18	<b>Wisconsin Chaplaincy Commission</b>	Dues paid to support the state-wide chaplaincy system.
19	<b>Interfaith Conference of Greater Milwaukee</b>	Founded in 1970, the Interfaith Conference of Greater Milwaukee is a non-profit organization through which the regional leaders and adherents of 13 member denominations and faiths dialog to build relationships, conduct educational programs to foster public understanding and tolerance, and work together on social justice issues to improve the quality of life for everyone.
20	<b>Native American Ministry</b>	Support provided to the Lutheran Church of the Great Spirit- Milwaukee
21	<b>Hmong Ministry Conference</b>	Support provided to this annual conference
22	<b>Lutheran Office for Public Policy - WI</b>	LOPPW is an ELCA advocacy ministry expressed through partnership of the 6 ELCA Synods with congregations in Wisconsin and ELCA World Hunger.
23	<b>Lutheran Outdoor Ministry</b>	Support provided to camping ministries in Wisconsin & Upper Michigan
24	<b>Lutheran Volunteer Corps</b>	LVC unites full-time stipend volunteers with financial supporters, non-profit organizations and ministries to work for peace with justice across the nation. In addition to working for justice, LVC volunteers live together in intentional household communities of 4-7 people to encourage simple, sustainable living.

## EXPLANATION OF BUDGETED INCOME AND EXPENSES

25	<b>Region V Office of the ELCA</b>	Region V encompasses the twelve synods of Illinois, Iowa, Wisconsin and Upper Michigan. Region V is a link between churchwide and the synods by assisting in communication and working on tasks between the two expressions, such as the assignment process for seminaries.
26	<b>Lutheran Planned Giving of Wisconsin</b>	The ELCA Foundation is the private foundation that exists to help all members of the church practice good stewardship of their assets. It is a pass-through foundation cultivating gifts for ministry and providing a full range of gift planning services and gift vehicles. Cynthia Halverson is the Regional Gift Planner for LPGW.
27	<b>ELCA World Hunger</b>	Approved in 2017, the GMS will fund the churchwide World Hunger Fund.
34	<b>Lutheran Campus Ministry</b>	We support two campus pastors, Rachel Young Binter & Jessica Short at UWM and Marquette University.
35	<b>Committees' Programs and Mission</b>	Funds to support the various small committees in our synod ministries.
36	<b>Communication Dept.</b>	Supports the communications of our synod with the 121 congregations.
37	<b>Synod Events</b>	Support for various one-time synod-wide events.
38	<b>Office of the Bishop</b>	Used where needed as determined by the bishop
39	<b>Cross+Generational Ministry Programs</b>	Support for various programs such as Youth Gathering Retreat and National Youth Gathering.
40	<b>Congregational Assistance and Sabbatical support</b>	Support for congregations in an emergency situation or for support when a pastor goes on a sabbatical.
42	<b>Candidacy Committee</b>	Support provided for people entering the candidacy program by paying part of the psychological testing of a candidate.
<b>LINE #</b>	<b>DESCRIPTION</b>	<b>EXPLANATION</b>
43	<b>Evangelism/New Mission Starts</b>	Funds used to aid in the start of new congregations in the synod
44	<b>Companion Synod Visits</b>	Funds used when delegations visit from the El Salvador Lutheran Church and the Meru Diocese of the Lutheran Church in Tanzania.
46	<b>Anti-Racism Training</b>	Support of Crossroads' workshops and other training events for the synod's commitment to anti-racism training.
47	<b>Leadership Support Events</b>	Used to supplement events such as Together in Mission, Fall Leadership Conference, and other events to grow leadership in our congregations.
48	<b>Additional Leadership Support Expenses</b>	Additional expenses accrued above and beyond expenses covered by Siebert Grants for leadership development ministry in the synod.
49	<b>Reconciling in Christ</b>	Funds used to support the Reconciling in Christ initiative within the synod.



## **EXPLANATION OF BUDGETED INCOME AND EXPENSES**

<b>52-60</b>	<b>Compensation and Employee Benefits</b>	Funds are provided to pay for the ministry of the Bishop and his staff. Included is cash salary, housing (where applicable), and Social Security reimbursement (where applicable). Benefits include retirement, health insurance and continuing education for all staff.
<b>61-65</b>	<b>Travel, hospitality and meetings</b>	Provides for synod staff & council meetings, staff travel to various events, and meetings at the synod office.
<b>66-69</b>	<b>Office Expenses</b>	Includes postage, office supplies, web hosting and software expenses.
<b>70-76</b>	<b>Purchased Services</b>	Covers legal expenses incurred throughout the year, the annual audit of the synod's finances by a CPA firm, payroll processing by Paychex, and telephone equipment.
<b>78</b>	<b>Office Insurance</b>	Dollars are used to cover GMS's property and equipment, liability and bonded coverages.
<b>82</b>	<b>Leased Equipment</b>	Funds are used for leased copier and postage equipment.
<b>83</b>	<b>Furniture &amp; Equipment</b>	Funds used to purchase office furniture, computers, & other equipment.
<b>85</b>	<b>Facilities Expense</b>	Covers rent and utilities for the synod office at Ascension Lutheran Church, Milwaukee.

## DESIGNATED RESTRICTED FUNDS

NUMBER	NAME OF FUND	BALANCE	PURPOSE/USE
		1/31/19	
1190-38	Bishop's Discretionary	\$ 3,015.00	Used for special/emergency needs within the synod.
1190-37	Ken Wheeler Scholarship	\$3,339.00	Established to aid seminarians in pursuit of a M/Div degree.
1190-39	Bishop's Initiative	\$0.00	Grant funds from Siebert Lutheran Foundation for Cross+Generational activities including Certification School
1190-42	Evangelism	\$ 23,685.00	Funds from ELCA Domestic Mission and others in support evangelism outreach and DEM operational expenses
1190-43	Stewardship For All Seasons	\$22,140.00	Siebert Grant being used for training/education for seven congregations on a two year stewardship program.
1190-44	New Mission Starts	\$ 34,663.00	Money set aside for new mission starts in the Synod.
1190-49	Leadership Development	\$ 35,791.00	Siebert Grant used for leadership development activities.
1190-50	Coaching	\$ 592.00	Funds used to support coaching training.
1190-53	Retired Pastors	\$ 12,925.00	Used to supplement retired pastors' income.
1190-59	Salary Retention	\$ 81,675.00	Funds utilized for positions that were supported by past grants.
1190-63	Endowment Fund	\$ 40,336.00	Established in 2014 to create a Synod Endowment Fund.
1191-14	Urban Internship	\$220,589.00	Sale of Immanuel L/C designated for Urban Internships. Sub-account of 1190-63 Endowment Fund
		\$ 13,526.00	Used for Anti-Racism Training.
1190-70	Anti-Racism Training	\$ 15,125.00	Funds set aside for young adult (20-30 yr. olds) programs.
1190-74	Young Adults	\$ 5,147.00	Origin of funds was the ELCA (\$6,000) and a local congregation (\$4,000). Used for honorariums & expenses assoc with events
1190-75	Care of Creation		
1190-76	Diakonia	\$ 6,137.00	Source of funds from participants and an estate gift used to pay teaching honorariums and provide scholarships to students.
1190-77	Synod Assembly	\$ 18,238.00	Funds used for SA expenses and any yearly shortfall.
1190-81	Prison Ministry	\$ 55,352.00	Initial grant from the ELCA to fund Breaking the Chains Prison Ministry- Siebert Grant of \$50,000 payable over three years to help fund a called pastor to the Felmers Chaney Correctional Center received May 2016- a Synodically Authorized Worshipping Community.
1190-91	Returning Veterans	\$ 1,000.00	Care to military families task force.

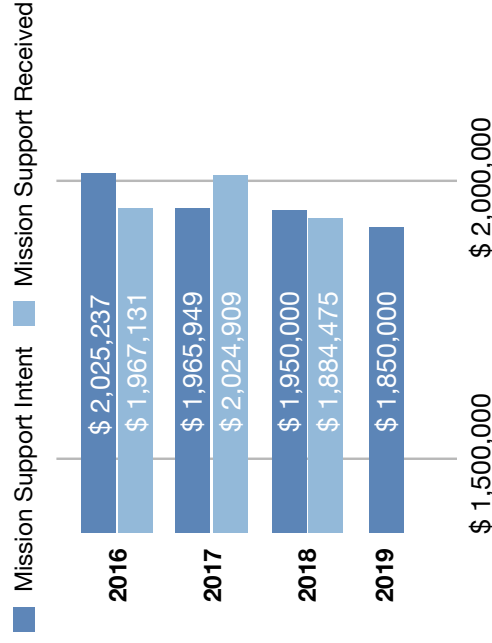
## DESIGNATED RESTRICTED FUNDS

NUMBER	NAME OF FUND	BALANCE 1/31/19	PURPOSE/USE
1190-93	RIC Task Force	\$ 784.00	Used at the discretion of the Reconciling in Christ Committee
1190-95	Spirit of Peace	\$ -	Designated funds for Spirit of Peace Congregation.
1190-98	Wellness- Portico	\$ 31,008.00	Used for wellness programs within the synod promoting wellness for all rostered and lay leaders.
1191-01	Cross+Generation	\$ 11,638.00	Used for programs and support of the Cross+Generation Network.\$
1191-12	Reformation 500th Year	4,350.00	Siebert Grant and individual contribution for commemorating the 500th year of the Reformation-events and tree plantings.
1191-13	The TABLE - SAWC	\$ 54,194.00	a 1st century style community in the 21st century- SAWC
1190-60	Cluster 1&2	\$ 4,697.00	Used for programs and support of Cluster 1&2 (Coalition) congregations with funds from those congregations.
1190-72	Meru	\$ 70,765.00	Used by the Meru Committee to support the Diocese, sister parishes through programs & educational opportunities. Includes grant funds for Tanzania well project from Good Shepherd sale.
1190-73	El Salvador	\$ 38,334.00	Used by the El Salvador Committee to support the El Salvador L/C and sister parishes through projects and school scholarships.
1190-97	Rogers St. Property	\$ 89,031.00	Sale of church and parsonage to be used for Latinx mission development.
1190-99	St. Andrew L/C, Waukesha	\$203,226.00	Proceeds from the sale of this church building to be used for mission development.
1191-16	Vibrant Faith- DEM Fund	\$ 3,253.00	A fund for the DEM used to offset expenses related to DEM ministry.
1190-38	Seminary Student Fund	\$100,666.00	Donor designated gift to support seminary students in the city of Milwaukee with seminary costs.
1191-18	Wayfarers Worshipping Collective	\$ (588.00)	Synodically authorized worshipping community centered around small group ministry.
	Unrestricted Synod Fund	\$136,007.00	Funds used to insure a stable cash-flow and to fund any year-end deficit.

# Your Story

Our Shared Generosity & Impact

## 2018 General Mission Support



For 2018

funds given directly

RAISED \$ 307,500  
DISTRIBUTED \$ 345,500

## 2018 Designated Support

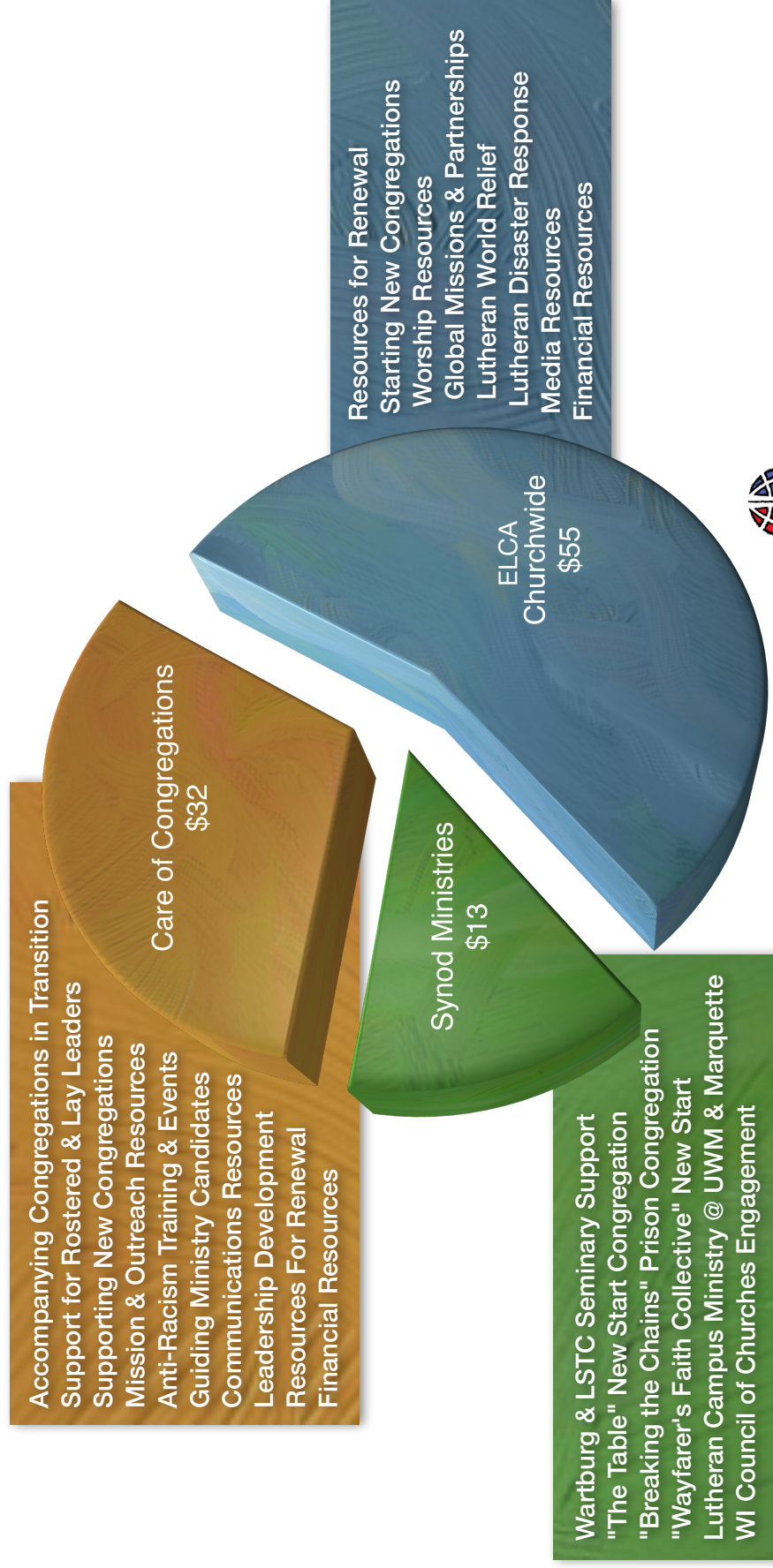
given through the Greater Milwaukee Synod

Meru Diocese in Tanzania	\$ 282,200
El Salvador	\$ 274,392
World Hunger Appeal	\$ 73,615
Mission Partners (local cong)	\$ 68,643
Lutheran Disaster Response	\$ 61,444
The Table	\$ 35,603
Breaking the Chains	\$ 31,142
Missionary Support	\$ 25,823
Lutheran World Relief	\$ 22,163
Outreach For Hope	\$ 21,959
Lutheran Social Services	\$ 20,363
Crossways & Lutherdale Camps	\$ 13,330
El Salvador - Pastoral Support	\$ 12,226
Lutheran Campus Ministry	\$ 6,387
AMMPARO	\$ 5,330
Luther Manor	\$ 5,103
ELCA Good Gifts & Global Spons.	\$ 2,477
Seminaries - LSTC & Wartburg	\$ 2,281
Campaign for the ELCA	\$ 2,000
God's Global Barnyard	\$ 1,800
Serenity Inns	\$ 1,528
Mt. Meru Coffee Project	\$ 1,357
Habitat For Humanity	\$ 259
ELCA - Vision For Mission	\$ 200

**2018 TOTAL** \$ 971,625  
2017 TOTAL \$ 920,279  
2016 TOTAL \$ 689,048

# Your Story

For every \$100 of Mission Support,  
this is the impact we all make together



**Greater Milwaukee Synod**  
**Evangelical Lutheran Church in America**  
God's work. Our hands.



## ANNIVERSARIES - 25 YEARS

### Rev. Walter Baires



**Spouse** – Elizabeth Baires

**Date of Ordination** – August 5, 1994

**Seminary** – Wartburg Theological Seminary, Dubuque, Iowa

### Rev. Brian Halverson



**Spouse** – Cynthia Halverson

**Date of Ordination** – October 2, 1994

**Seminary** – Lutheran School of Theology at Chicago, Chicago, Illinois

### Rev. Vicki Watkins



**Date of Ordination** – June 4, 1994

**Seminary** – Lutheran School of Theology at Chicago, Chicago, Illinois

**Favorite ministry memory** – It occurred during my first call in Jersey City. During a baptism, one of the younger members of the congregation broke away from her parents and made her way down the center aisle to the

front of the church. If my memory serves me, I think she was somewhere between 4 and 5. She approached me and gave a tug on my alb and asked if she could see the baby. I asked the parent if it was ok. They gave their permission. I asked the "runaway" if she would like to help me and her eyes got as big as marbles. I asked her to hold the baptismal napkin and candle and to give them to me when I asked for them. She held on to them as if they were precious gold. And when I did ask for them, she handed them to me as if they would break if she or I would drop either of them. After the baptism, the family went back to their seats and I then told my helper she could return to her seat. She walked up the aisle back to her

40 parents very proudly.

*"I thank my God every time  
I remember you, constantly  
praying with joy in every one  
of my prayers for all of you,  
because of your sharing in  
the gospel from the first day  
until now."*

*Philippians 1:3-5*

## ANNIVERSARIES - 40 YEARS

### Rev. Jeffrey Barrow



**Spouse** – Kathryn Barrow

**Date of Ordination** – September 16, 1979

**Seminary** – Luther Theological Seminary, St. Paul, Minnesota

**Favorite ministry**

**memory** – People have often asked, “When were you called to ministry?” There are many answers to that question, starting with baptism, but I always respond, “When I was in my first parish.” Truth be told, I thought I might try to get in my

three years in a parish and go into specialized ministry...perhaps outdoor ministry. The people in Arneckeville, Texas, changed all that. After one week in my first call, a very sad thing happened. A man who was terribly gifted, but who could never live up to his own expectations, went out into a pasture with a pocket Testament and a shot gun and took his own life. A community was shaken and I, as a new pastor, was so far in over my head. They found the body out in the early afternoon. It was the news they feared but did not want to hear. Walter and Dorothy Wolf were the good neighbors who opened their home. As evening fell, as people got off work, mostly members of the congregation, gathered to surround the family. Some were in the kitchen preparing meals. Others sat in the living room in a circle. Some prayed, some wept, some shared their own journey into darkness... all embraced the heartbroken family. I was there late into the evening...still scared, still in over my head. But as I returned in silence to the parsonage, I remember thinking to myself, “If this is what the body of Christ is all about, I can do this.” Nothing shaped my view of ministry more than that event.

### Rev. Kathy Boadwine



**Date of Ordination** – June 17, 1979

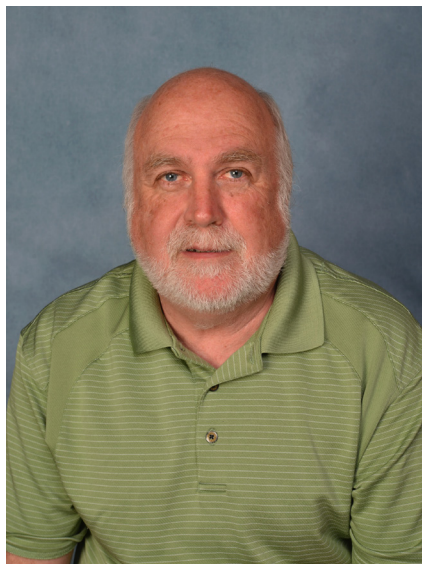
**Seminary** – Wartburg Theological Seminary, Dubuque, Iowa

**Favorite ministry**

**memory** – I have been blessed to serve God’s church and God’s people in a variety of settings all in Southern Wisconsin. Each congregation has its own character and identity,

each congregation seeking to be God’s people in their place and time. In my years of ministry I have been blessed to proclaim God’s Word to God’s people, to splash water on the newly baptized and announce, “The Body of Christ given to you” to the young and old alike. I have been blessed to stand with God’s people in times of sorrow and disappointment and heartache, and in times of joy and celebration. I have been blessed to have walked side-by-side with so many in their faith journeys. I hold dear the faces and stories and am so thankful for the gift received.

### Rev. Myron Deschaine



**Spouse** – Mary Deschaine

**Date of Ordination** – March 1, 1979

**Seminary** – Northwestern Lutheran Seminary, St. Paul, Minnesota

### Rev. David Echelbarger



**Spouse** – Christine Thomas-Echelbarger

**Date of Ordination** – June 10, 1979

**Seminary** – Lutheran School of Theology at Chicago, Chicago, Illinois



## ANNIVERSARIES - 40 YEARS

### Rev. Joan Jacobson-Wolf



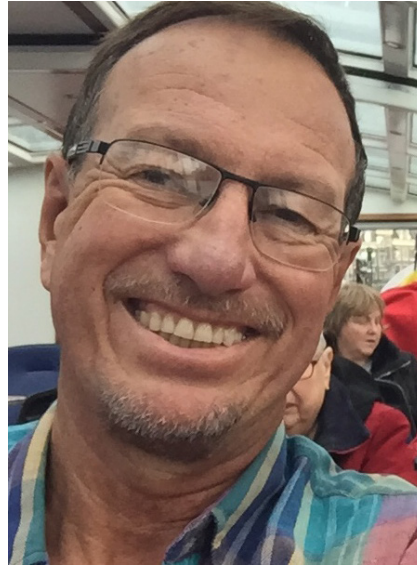
**Spouse** – Donald Jacobson

**Date of Ordination** – August 24, 1979

**Seminary** – Lutheran School of Theology at Chicago, Chicago, Illinois

McCormick Theological Seminary, Chicago, Illinois (Doctor of Ministry)

### Rev. Stephen Kersten



**Spouse** – Judy Kersten

**Date of Ordination** – September 22, 1979

**Seminary** – Luther Theological Seminary, St. Paul, Minnesota

Lutheran School of Theology at Chicago, Chicago, Illinois (Doctor of Ministry)

**Favorite ministry memory** – Working with small groups at all

my churches, and seeing people grow in their faith and take on leadership positions. Also almost catching a muskie, but Larry Harpster dropped it out of the net.

### Rev. Janis Kinens



**Spouse** – Aina Kinens

**Date of Ordination** – May 31, 1979

**Seminary** – Lutheran School of Theology at Chicago, Chicago, Illinois

### Rev. Christine Thomas-Echelbarger



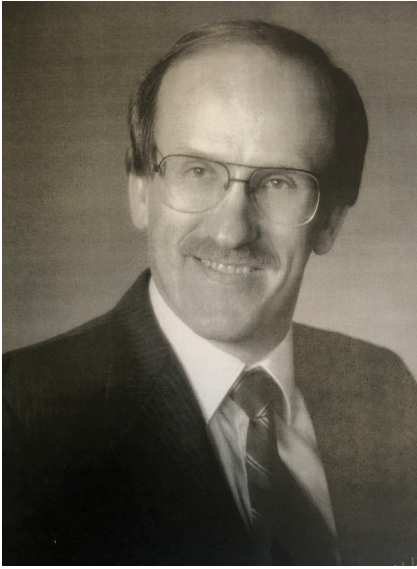
**Spouse** – David Echelbarger

**Date of Ordination** – May 31, 1979

**Seminary** – Lutheran School of Theology at Chicago, Chicago, Illinois

## ANNIVERSARIES - 50 YEARS

### Rev. Albert Guetzlaff

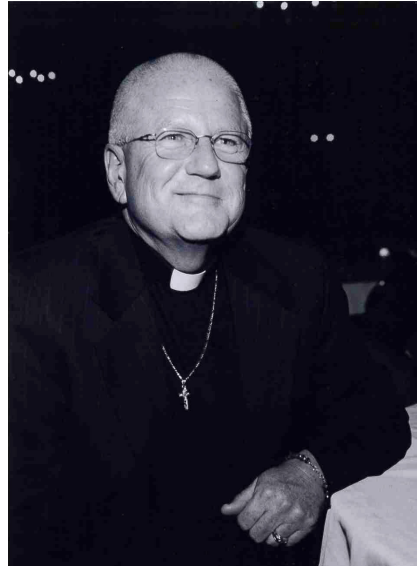


**Spouse** – Sharon Guetzlaff

**Date of Ordination** – June 22, 1969

**Seminary** – Wartburg Theological Seminary, Dubuque, Iowa

### Rev. Stanley Hanna



**Spouse** – Julie Hanna

**Date of Ordination** – June 15, 1969

**Seminary** – Lutheran School of Theology at Chicago, Chicago, Illinois

### Rev. Edward Ruen



**Spouse** – Kathleen Ruen

**Date of Ordination** – October 5, 1969

**Seminary** – Wartburg Theological Seminary, Dubuque, Iowa

**Favorite ministry memory** – Family gathering on the steps of St. Brigid's Catholic Church, 123

Ave. C, New York City, in April 2018. In April, 1968, Ed and Katie were married there with Father Calhoun and Rev. Pulley from Trinity Lutheran officiating.

### Rev. Erv Uecker



**Spouse** – Ross Walker

**Date of Ordination** – June 9, 1969

**Seminary** – Lutheran School of Theology at Chicago, Chicago, Illinois

**Favorite ministry memory** – Almost ten years at St. Luke's Chicago as Senior Pastor, living with my partner/husband in the parsonage next door to

the Church with a staff of 4 ordained Ministers serving as Associates and 5 Lay Staff, directing 60 program units with worship, programs and fellowship for all ages 7 days a week from 8am until 10pm, including serving noon meals to 200 seniors daily. It was a period of "ecclesiastical whirlwind". Early 70's began to become sensitive to my insensitivity to sexism and slowly modified my behavior and attitude.



## ANNIVERSARIES - 60 YEARS

### Rev. Adolph Kappes



**Spouse** – Claire Kappes

**Date of Ordination** – June 5, 1959

**Seminary** – Waterloo Lutheran Seminary, Waterloo, ON, Canada

**Favorite ministry memory** – The privilege of building a new church in my first parish, and befriending a great Mennonite Community. Being the first person to perform

a funeral in that old order Mennonite Church. Also, the great experience of initiative relations with Catholic and Missouri clergy, celebrating in their churches: in weddings, baptisms and preaching. I also conducted funeral committals in their cemeteries for years.

### Rev. Paul Lee



**Spouse** – Barbara Lee

**Date of Ordination** – June 21, 1959

**Seminary** – Luther Seminary, St. Paul, Minnesota

**Favorite ministry memory** – Starting a new congregation in Wabasha, Minnesota. Started with no members and grew to 175 in three years time.

### Rev. Justin Silvius



**Spouse** – Maxine Silvius

**Date of Ordination** – September 27, 1959

**Seminary** – Northwestern Lutheran Seminary, St. Paul, Minnesota

**Favorite ministry memory** – Playing the piano occasionally in sermons. Also used this medium for many stewardship dinners at

other churches, synod conventions, weddings and funerals.

### Rev. William Truby



**Spouse** – Nancy Truby

**Date of Ordination** – June 3, 1959

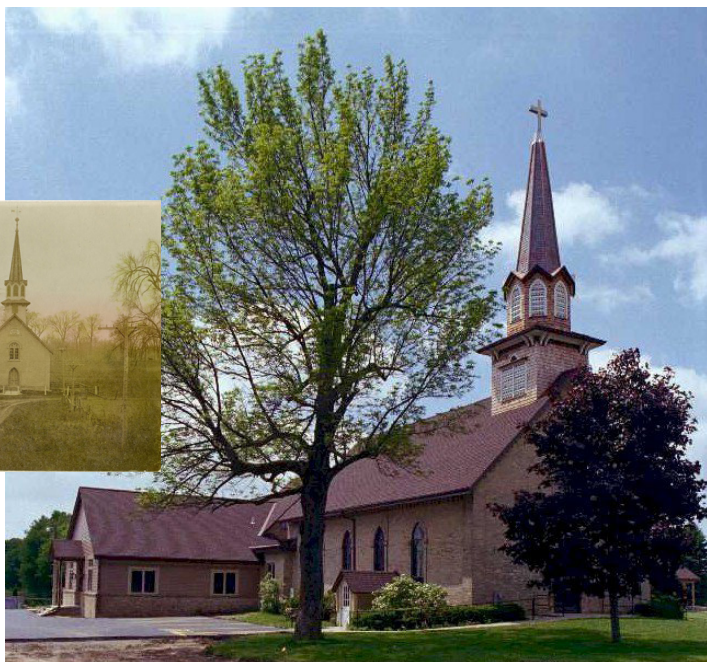
**Seminary** – Lutheran Theological Seminary at Philadelphia, Philadelphia, Pennsylvania



## CONGREGATIONAL ANNIVERSARIES - 175 YEARS



**St. John's Lutheran Church, Stone Bank**

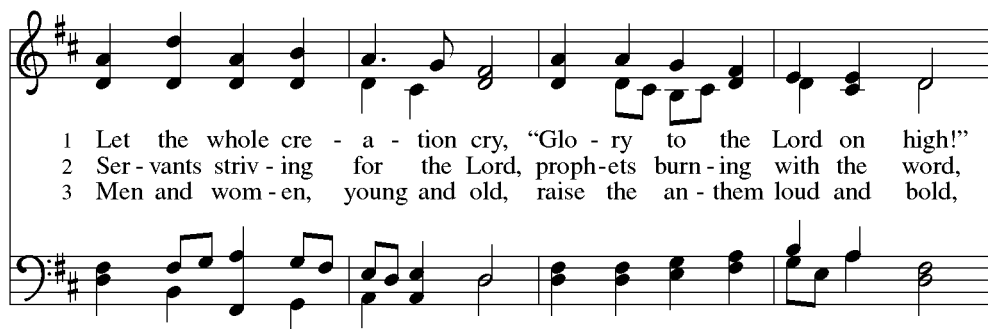


**St. Olaf Lutheran Church, Rubicon**



**St. Matthew Lutheran Church, Palmyra**

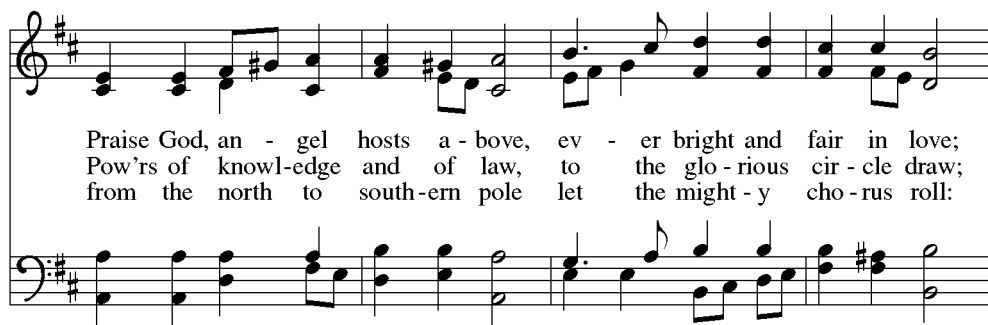
## Let the Whole Creation Cry



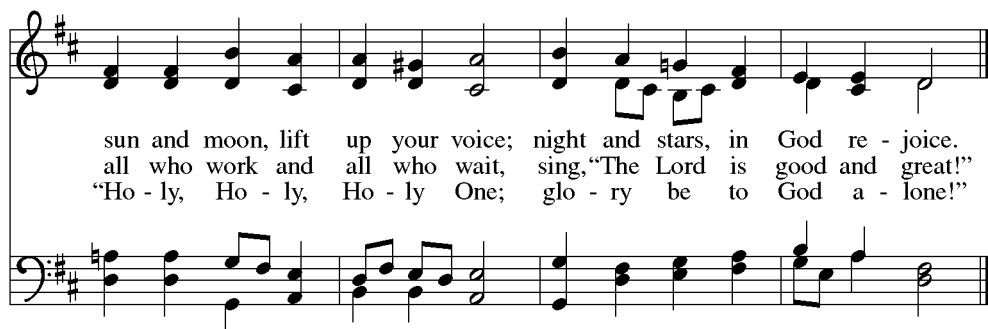
1 Let the whole cre - a - tion cry, "Glo - ry to the Lord on high!"  
 2 Ser - vants striv - ing for the Lord, proph - ets burn - ing with the word,  
 3 Men and wom - en, young and old, raise the an - them loud and bold,



Heav'n and earth, a - wake and sing, "Praise to our al - might - y king!"  
 those to whom the arts be - long add their voic - es to the song.  
 and let chil - dren's hap - py hearts in this wor - ship take their parts;



Praise God, an - gel hosts a - bove, ev - er bright and fair in love;  
 Pow'rs of knowl - edge and of law, to the glo - rious cir - cle draw;  
 from the north to south - ern pole let the might - y cho - rus roll:



sun and moon, lift up your voice; night and stars, in God re - joice.  
 all who work and all who wait, sing, "The Lord is good and great!"  
 "Ho - ly, Ho - ly, Ho - ly One; glo - ry be to God a - lone!"

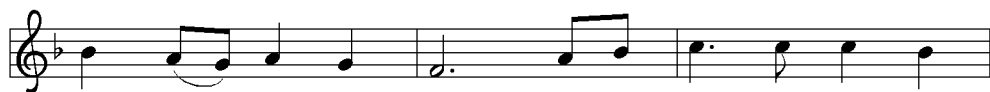
## All Are Welcome



1 Let us build a house where love can dwell and all can safe - ly  
 2 Let us build a house where proph-ets speak, and words are strong and  
 3 Let us build a house where love is found in wa - ter, wine and  
 4 Let us build a house where hands will reach be - yond the wood and  
 5 Let us build a house where all are named, their songs and vi - sions



live, a place where saints and chil - dren tell how  
 true, where all God's chil - dren dare to seek to  
 wheat: a ban - quet hall on ho - ly ground where  
 stone to heal and strength - en, serve and teach, and  
 heard and loved and trea - sured, taught and claimed as



hearts learn to for - give. Built of hopes and dreams and  
 dream God's reign a - new. Here the cross shall stand as  
 peace and jus - tice meet. Here the love of God, through  
 live the Word they've known. Here the out - cast and the  
 words with - in the Word. Built of tears and cries and



vi - sions, rock of faith and vault of grace; here the love of  
 wit - ness and as sym - bol of God's grace; here as one we  
 Je - sus, is re - vealed in time and space; as we share in  
 strang-er bear the im - age of God's face; let us bring an  
 laugh-ter, prayers of faith and songs of grace, let this house pro -




Christ shall end di - vi - sions:  
 claim the faith of Je - sus:  
 Christ the feast that frees us: All are wel - come,  
 end to fear and dan - ger:  
 claim from floor to raf - ter:




all are wel - come, all are wel - come in this place.

# Behold, How Pleasant *Miren qué bueno*

*Refrain / Estribillo*




¡Mi - ren qué bue - no, qué bue - no es!  
Be - hold, how plea - sant, how good it is!



1 Mi - ren qué bue - no es cuan - do nos reu - ni - mos to - dos jun - tos:  
1 How plea - sant and har - mo - nious when God's peo - ple are to - geth - er:  
2 How plea - sant and har - mo - nious when God's peo - ple are to - geth - er:  
3 How plea - sant and har - mo - nious when God's peo - ple are to - geth - er:

*Refrain / Estribillo*



es co - mo a - cei - te bue - no de - rra - ma - do so - bre Aa - rón.  
fra - grant as pre - cious oil when run - ning fresh on Aa - ron's beard.  
re - fresh - ing as the dew up - on the moun - tain of the Lord.  
there the Lord God be - stows a bless - ing— life for - ev - er - more.

2 *Miren qué bueno es cuando  
nos reunimos todos juntos:  
se parece al rocío  
sobre los montes de Sión. Estribillo*

3 *Miren qué bueno es cuando  
nos reunimos todos juntos:  
porque el Señor nos manda  
vida eterna y bendición. Estribillo*

## Build Us Up, Lord

1 Build us up, Lord, build us up; set in  
2 Build us up, Lord, build us up; let our

us a strong foun - da - tion. Lead us to do your  
lives re - flect your glo - ry. Cast a - way all our

ho - ly will; form and shape your new cre - a - tion.  
doubts and fears; help us tell the world your sto - ry.

Build us up, Lord, build us up; as we  
Build us up, Lord, build us up; help us

guide and teach each oth - er, help us to share your love with the  
bear good fruit for you, Lord, give us vi - sion and keep us

world: ev - 'ry sis - ter, ev - 'ry broth - er.  
sure. Grant us faith that's stead - fast and true.

*Refrain*

Grow - ing in Christ, we plant seeds for the king - dom; we fol - low in

faith what's be - gun! Lord, set in our hearts the pow'r of your

word to spread the news of your Son!

## **SENDING SERVICE**

### **Installation of Synod Leadership**

*Those who have been elected at this assembly to positions of leadership in this synod are named and invited to come forward and gather at the front of the assembly hall at this time.*

*A reading from Romans:* As in one body we have many members, and not all the members have the same function, so we, who are many, are one body in Christ, and individually we are members one of another. We have gifts that differ according to the grace given to us: prophecy, in proportion to faith; ministry, in ministering; the teacher, in teaching; the exhorter, in exhortation; the giver, in generosity; the leader, in diligence; the compassionate, in cheerfulness. (Romans 12:4-8)

Will you assume the office to which you have been elected and will you endeavor to carry out its duties faithfully, to the glory of Christ our Lord and in service to the one holy church?

**I will, and I ask God to help me.**

Will you endeavor in all things to conduct yourselves as is fitting for ambassadors and servants of Jesus Christ?

**I will, and I ask God to help me.**

Will you be faithful, understanding, and loving to the people among whom you serve?

**I will, and I ask God to help me.**

Almighty God, who has given you the will to do these things, graciously give you the strength and compassion to perform them.

And you, people of God and people of the Greater Milwaukee Synod, will you support and pray for these messengers of Jesus Christ, sent by God to serve God's people in this work?

**We will, and we ask God to help us.**

Let us pray. Blessed are you, O Lord our God, for you have sent your son into our world to proclaim your kingdom and, by his death and resurrection, to reconcile all people to your gracious plan.

**We bless you and praise your name forever.**

Blessed are you, O Holy Spirit, for you sent forth your apostles to proclaim the good news of salvation and filled them with your power.

**We bless you and praise your name forever.**

Bless these servants, O Lord, in the work you have called them to do, so that, by the power of your Holy Spirit, they may show your love to all people and glorify your name.

**Amen**



## **SENDING SERVICE**

Almighty God, you have blessed each of us with unique gifts and you have called us into specific occupations, relationships, and activities using those gifts. Enable us to use our talents to witness to our faith in you and to communicate your love to the people we meet each day. Empower us to be ministers of reconciliation, love, hope, and justice. Keep us steadfast in our commitment to serve actively in your name, through Jesus Christ our Lord.

**Amen**

### **Order for the Closing of the Assembly**

Jesus said, You will be my witnesses  
**to the ends of the earth.**

I chose you and appointed you  
**to bear fruit that will last.**

Remember, I will be with you always,  
**to the end of time.**

The Lord be with you.  
**And also with you.**

Let us pray. Direct us, O Lord God, in all our doings with your most gracious favor, and extend to us your continual help; that in all our works begun, continued, and ended in you, we may glorify your holy name; and finally, by your mercy, bring us to everlasting life; through Jesus Christ, our Savior and Lord.

**Amen.**

O God, our beginning and our end, you kept Abraham and Sarah in safety throughout the days of their pilgrimage, you led the children of Israel through the midst of the sea, and by a star you led the magi to the infant Jesus. Protect and guide us now as we set out to travel. Make our ways safe and our homecomings joyful, and bring us at last to our heavenly home, where you dwell in glory with our Lord Jesus Christ and the life-giving Holy Spirit, one God, now and forever.

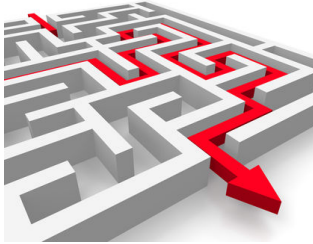
**Amen.**

I declare this assembly closed in the name of the Father, and of the Son, and of the Holy Spirit.

**Amen.**

Go in peace. Share the good news.

**Thanks be to God.**



## **ROBERT'S RULES OF ORDER**

Robert's Rules of Order can be complicated, but they are necessary for an orderly discussion in such a large assembly as this one. This simple guide can help to navigate your way through the process and the language that you will encounter. Please be assured the bishop and the parliamentarian will assist the assembly in understanding what is happening. Good luck and God be with you!

### What is a motion?

A motion is the act of presenting an order of business to the floor of the assembly. A motion can be made to:

- Introduce or amend a resolution or item presented to the assembly for approval.
- Refer the issue for further study.
- Table (postpone) an issue for discussion at a later time.
- Call the question. (This will end discussion and allow for a vote on the motion.)
- Some motions cannot be debated. The chairperson will inform you if this is the case.

A motion often requires a "second," another person who supports the motion. Motions coming from a congregation or committee do not need to be seconded. If a motion does not receive a second, it cannot be discussed.

### Here's how it works:

1. An item will be moved (presented for discussion) by a voting member or a committee chair.
2. Someone comes to a microphone and the chair of the assembly (normally the bishop) invites them to speak.
3. That person will give their name, congregation, and their reason for speaking: "I have a motion to present"; "I speak in favor of the motion"; "I speak in opposition to the motion"; "I have a question."
4. If a motion is made, the bishop will ask for a second.
5. If there is a second, the motion is "on the floor," and the presenter may speak to it and discussion can occur, including the consideration of possible amendments.
6. If someone wants to end the debate, they may come to the microphone, wait to be recognized, and say "I call the previous question." A vote is then taken on whether or not to end debate. Please note that this process may slow down taking a final vote.
7. Once debate is completed (either by vote or by the natural end of discussion) a vote will be taken by the Assembly on the motion that was presented.
8. At times this process can get complicated and the bishop or designated parliamentarian will assist the assembly on knowing where we are at in the process.



- When presenting an amendment to a motion or a resolution, please write it out. After you have presented it to the assembly, please submit it to the synod secretary.
- When addressing the assembly, please limit your comments to the topic at hand. Comments or motions that stray may be ruled "out of order" by the chair.

# PRACTICAL POINTERS ON PARLIAMENTARY PROCEDURE

## ACCORDING TO ROBERT'S RULES OF ORDER AS OF 1/2010

*These Motions are listed in order of precedence. When any are pending you cannot introduce one listed BELOW it, only those above.*

YOU WANT TO DO	YOU SAY	Can you interrupt speaker?	Second Necessary?	Motion Debatable?	Motion Amendable?	Vote % Required
<i>Listed in order of precedence:</i>						
<b>Adjourn</b>	I move we adjourn	NO interruption	YES, 2nd	NOT Debatable	NOT Amendable	Majority
<b>Recess</b>	I move we recess	NO interruption	YES, 2nd	NOT Debatable	YES Amendable	Majority
<b>Register complaint</b>	Chairperson, Point of Privilege	YES interrupt	NO 2nd	NOT Debatable	NOT Amendable	No vote, chair decides
<b>Suspend further consideration of a matter (to table)</b>	I move we table this motion	NO interruption	YES, 2nd	NOT Debatable	NOT Amendable	Majority
<b>End discussion/debate</b>	I move the previous question	NO interruption	YES, 2nd	NOT Debatable	NOT Amendable	2/3 vote required
<b>To limit or extend debate on a motion</b>	I move we limit (or extend) debate for ____ minutes	NO interruption	YES, 2nd	NOT Debatable	YES Amendable	2/3 vote required
<b>Postpone consideration of a matter</b>	I move we postpone this matter until ____	NO interruption	YES, 2nd	YES Debatable	YES Amendable	Majority
<b>Move (refer) for further study</b>	I move we refer this matter to committee	NO interruption	YES, 2nd	YES Debatable	YES Amendable	Majority
<b>Amend motion</b>	I move this motion be amended to read__	NO interruption	YES, 2nd	YES Debatable	YES Amendable	Majority
<b>Introduce new business, motion</b>	I move that . . .	NO interruption	YES, 2nd	YES Debatable	YES Amendable	Majority
<b>Suspend the rules</b>	I move we suspend the rules concerning ____	NO interruption	YES, 2nd	NOT Debatable	NOT Amendable	2/3 vote required
<b>Point of Order</b>	Chairperson Point of Order	YES interrupt	NO 2nd	NOT Debatable	NOT Amendable	No vote, chair decides
<b>When a vote outcome is in question</b>	Chairperson, I call for Division of the House	YES interrupt	NO 2nd	NOT Debatable	NOT Amendable	No vote, must be done
<b>To withdraw a motion</b>	I withdraw my motion	NO interruption	NO 2nd	NOT Debatable	NOT Amendable	Majority
<b>To close nominations</b>	I move to close nominations	NO interruption	YES, 2nd	NOT Debatable	YES Amendable	2/3 vote required
<b>To reconsider a motion</b>	I move to reconsider (name the motion)	NO interruption	YES, 2nd	YES Debatable	NOT Amendable	Majority
<b>To take from the table</b>	I move we take (motion) from the Table for consideration	NO interruption	YES, 2nd	NOT Debatable	NOT Amendable	Majority

## NOTES

## NOTES



## Evangelical Lutheran Church in America

God's work. Our hands.

### Greater Milwaukee Synod – 2019 Nomination Form

Please TYPE or PRINT CLEARLY

Name \_\_\_\_\_

#### Nominating Information (all information required)

Position (*check one*): ☐ Churchwide Assembly ☐ Consultation ☐ Discipline ☐ Nominating ☐ Synod Council

Representing (*check one*):

☐ At-Large ☐ Cluster (if cluster, name of cluster required) \_\_\_\_\_

(*Check one*):

☐ Female ☐ Male

(*Check one*):

☐ Clergy ☐ Lay

(*Check all that apply*):

☐ African American/Black ☐ Asian American ☐ European American

☐ Latinx American ☐ Native American ☐ Other (if other, specify) \_\_\_\_\_

Date of Birth \_\_\_\_\_ First language, if other than English \_\_\_\_\_

Member of (congregation name and city) \_\_\_\_\_

#### Personal Information

Address \_\_\_\_\_

Street, City, State, Zip

Phone - Work \_\_\_\_\_ Home or Cell \_\_\_\_\_

Email \_\_\_\_\_

Current Position - Employment \_\_\_\_\_

Education or other experience \_\_\_\_\_

List three significant church-service positions, with dates

1. \_\_\_\_\_
2. \_\_\_\_\_
3. \_\_\_\_\_

List three significant community-service positions, with dates

1. \_\_\_\_\_
2. \_\_\_\_\_
3. \_\_\_\_\_

Are you willing to serve if elected? \_\_\_\_\_

Please return completed form promptly to Mary Romskog at:

Email: [mary.romskog@milwaukeeesynod.org](mailto:mary.romskog@milwaukeeesynod.org)

Fax: 414-671-1756

Mail: Greater Milwaukee Synod, 1212 S Layton Blvd, Milwaukee WI 53215

Please direct questions to Mary Romskog (414-671-1212)

This form is available online at: <https://milwaukeeesynod.org/event/2019-synod-assembly/>